

Product Name: Kanadaptin Rabbit Polyclonal Antibody**Catalog #: APRab12892**

For research use only.

Summary

Description	Rabbit polyclonal Antibody
Host	Rabbit
Application	WB,IHC,ICC/IF,ELISA
Reactivity	Human,Mouse
Conjugation	Unconjugated
Modification	Unmodified
Isotype	IgG
Clonality	Polyclonal
Form	Liquid
Concentration	1mg/ml
Storage	Aliquot and store at -20°C (valid for 12 months). Avoid freeze/thaw cycles.
Shipping	Ice bags
Buffer	Liquid in PBS containing 50% glycerol, 0.5% protective protein and 0.02% New type preservative N.
Purification	Affinity purification

Application

Dilution Ratio	WB 1:500-1:2000,IHC 1:100-1:300,ICC/IF 1:200-1:1000,ELISA 1:5000-1:20000
Molecular Weight	85kDa

Antigen Information

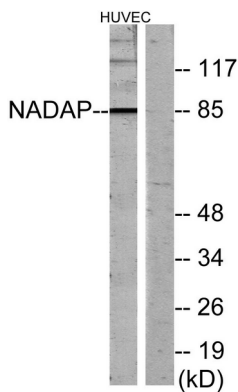
Gene Name	SLC4A1AP SLC4A1AP; HLC3; Kanadaptin; Human lung cancer oncogene 3 protein; HLC-3; Kidney anion
Alternative Names	exchanger adapter protein; Solute carrier family 4 anion exchanger member 1 adapter protein
Gene ID	22950.0
SwissProt ID	Q9BWU0
Immunogen	The antiserum was produced against synthesized peptide derived from human NADAP. AA range:421-470

Background

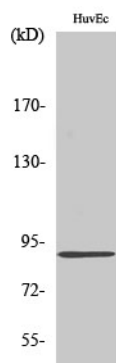
caution:PubMed:15764369 initially suggested a role in targeting SLC4A1 (kidney anion exchanger 1) to the plasma membrane; it does not seem to do so as it does not interact with SLC4A1 and has no effect on SLC4A1 trafficking.,online information:Band 3 entry,PTM:Phosphorylated upon DNA damage, probably by ATM or ATR.,similarity:Contains 1 FHA domain.,subcellular location:Mainly nuclear. Small amounts are found in the cytoplasm.,tissue specificity:Ubiquitously expressed.,caution:PubMed:15764369 initially suggested a role in targeting SLC4A1 (kidney anion exchanger 1) to the plasma membrane; it does not seem to do so as it does not interact with SLC4A1 and has no effect on SLC4A1 trafficking.,online information:Band 3 entry,PTM:Phosphorylated upon DNA damage, probably by ATM or ATR.,similarity:Contains 1 FHA domain.,subcellular location:Mainly nuclear. Small amounts are found in the cytoplasm.,tissue specificity:Ubiquitously expressed.,

Research Area

Image Data



Western blot analysis of lysates from HUVEC cells, using NADAP Antibody. The lane on the right is blocked with the synthesized peptide.



Western Blot analysis of various cells using Kanadaptin Polyclonal Antibody diluted at 1: 2000