
Product Name: K1H2 Rabbit Polyclonal Antibody**Catalog #: APRab12878**

For research use only.

Summary

Description	Rabbit polyclonal Antibody
Host	Rabbit
Application	WB,ELISA
Reactivity	Human,Rat,Mouse
Conjugation	Unconjugated
Modification	Unmodified
Isotype	IgG
Clonality	Polyclonal
Form	Liquid
Concentration	1mg/ml
Storage	Aliquot and store at -20°C (valid for 12 months). Avoid freeze/thaw cycles.
Shipping	Ice bags
Buffer	Liquid in PBS containing 50% glycerol, and 0.02% New type preservative N.
Purification	Affinity purification

Application

Dilution Ratio	WB 1:500-1:2000,ELISA 1:5000-1:20000
Molecular Weight	49kDa

Antigen Information

Gene Name	KRT32 HHA2 HKA2 KRTHA2
Alternative Names	
Gene ID	3882.0
SwissProt ID	Q14532
Immunogen	Synthesized peptide derived from human protein . at AA range: 220-300

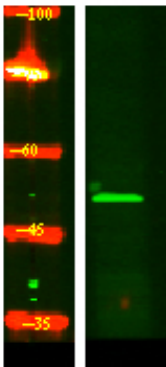
Background

The protein encoded by this gene is a member of the keratin gene family. As a type I hair keratin, it is an acidic protein which heterodimerizes with type II keratins to form hair and nails. The type I hair keratins are clustered in a region of chromosome 17q12-q21 and have the same direction of transcription. [provided by RefSeq, Jul 2008],miscellaneous:There are two types of

hair/microfibrillar keratin, I (acidic) and II (neutral to basic),,similarity:Belongs to the intermediate filament family,,tissue specificity:Restricted to the hair cuticle.,

Research Area

Image Data



Western Blot analysis of HeLa lysis, using primary antibody at 1:1000 dilution. Secondary antibody was diluted at 1:10000