
Product Name: Jun B Rabbit Polyclonal Antibody**Catalog #: APRab12852**

For research use only.

Summary

Description	Rabbit polyclonal Antibody
Host	Rabbit
Application	WB,IHC,ICC/IF,ELISA,IP
Reactivity	Human,Mouse
Conjugation	Unconjugated
Modification	Unmodified
Isotype	IgG
Clonality	Polyclonal
Form	Liquid
Concentration	1mg/ml
Storage	Aliquot and store at -20°C (valid for 12 months). Avoid freeze/thaw cycles.
Shipping	Ice bags
Buffer	Liquid in PBS containing 50% glycerol, 0.5% protective protein and 0.02% New type preservative N.
Purification	Affinity purification

Application

Dilution Ratio	WB 1:500-1:2000,IHC 1:100-1:300,ICC/IF 1:50-1:200,ELISA 1:10000-1:20000,IP 1:20-1:50
Molecular Weight	36kDa

Antigen Information

Gene Name	JUNB
Alternative Names	JUNB; Transcription factor jun-B
Gene ID	3726.0
SwissProt ID	P17275
Immunogen	The antiserum was produced against synthesized peptide derived from human JunB. AA range:226-275

Background

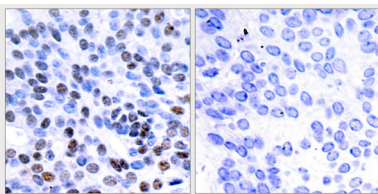
function:Transcription factor involved in regulating gene activity following the primary growth factor response. Binds to the

DNA sequence 5'-TGA[CG]TCA-3',induction:By growth factors.,similarity:Belongs to the bZIP family.,similarity:Belongs to the bZIP family. Jun subfamily.,similarity:Contains 1 bZIP domain.,subunit:Binds DNA as an homodimer or as an heterodimer with another member of the jun/fos family.,function:Transcription factor involved in regulating gene activity following the primary growth factor response. Binds to the DNA sequence 5'-TGA[CG]TCA-3',induction:By growth factors.,similarity:Belongs to the bZIP family.,similarity:Belongs to the bZIP family. Jun subfamily.,similarity:Contains 1 bZIP domain.,subunit:Binds DNA as an homodimer or as an heterodimer with another member of the jun/fos family.,

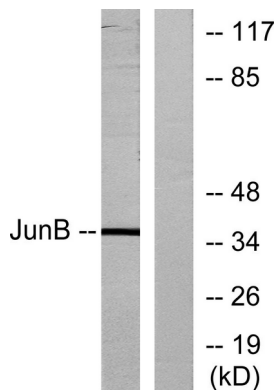
Research Area

Epigenetics and Nuclear Signaling

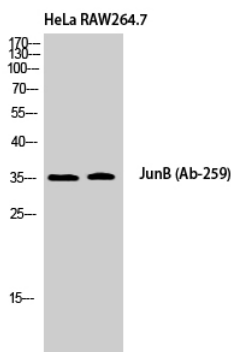
Image Data



Immunohistochemistry analysis of paraffin-embedded human breast carcinoma tissue, using JunB Antibody. The picture on the right is blocked with the synthesized peptide.



Western blot analysis of lysates from HeLa cells, using JunB Antibody. The lane on the right is blocked with the synthesized peptide.



Western Blot analysis of HeLa RAW264.7 cells using Jun B Polyclonal Antibody.