

Product Name: JTB Rabbit Polyclonal Antibody**Catalog #: APRab12851**

For research use only.

Summary

Description	Rabbit polyclonal Antibody
Host	Rabbit
Application	WB,IHC
Reactivity	Human,Rat,Mouse
Conjugation	Unconjugated
Modification	Unmodified
Isotype	IgG
Clonality	Polyclonal
Form	Liquid
Concentration	1mg/ml
Storage	Aliquot and store at -20°C (valid for 12 months). Avoid freeze/thaw cycles.
Shipping	Ice bags
Buffer	Liquid in PBS containing 50% glycerol, 0.5% protective protein and 0.02% New type preservative N.
Purification	Affinity purification

Application

Dilution Ratio	WB 1:500-1:2000,IHC 1:50-1:300
Molecular Weight	17kDa

Antigen Information

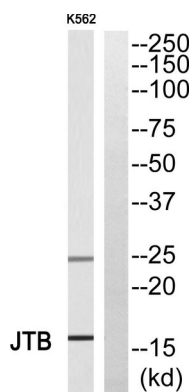
Gene Name	JTB
Alternative Names	JTB; HSPC222; Protein JTB; Jumping translocation breakpoint protein; Prostate androgen-regulated protein; PAR protein
Gene ID	10899.0
SwissProt ID	O76095
Immunogen	The antiserum was produced against synthesized peptide derived from human JTB. AA range:10-59

Background

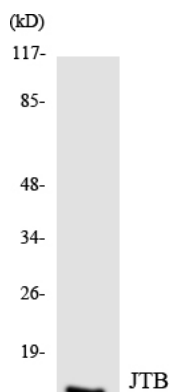
similarity:Belongs to the JTB family.,tissue specificity:Expressed in all normal human tissues studied but overexpressed in most of their malignant counterparts.,similarity:Belongs to the JTB family.,tissue specificity:Expressed in all normal human tissues studied but overexpressed in most of their malignant counterparts.,

Research Area

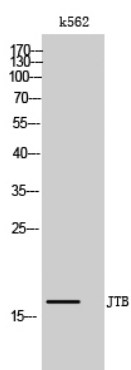
Image Data



Western blot analysis of JTB Antibody. The lane on the right is blocked with the JTB peptide.



Western blot analysis of the lysates from HUVEC cells using JTB antibody.



Western Blot analysis of k562 cells using JTB Polyclonal Antibody