
Product Name: IRF-1 Rabbit Polyclonal Antibody**Catalog #: APRab12737**

For research use only.

Summary

Description	Rabbit polyclonal Antibody
Host	Rabbit
Application	WB,IHC,ELISA
Reactivity	Human,Mouse,Rat
Conjugation	Unconjugated
Modification	Unmodified
Isotype	IgG
Clonality	Polyclonal
Form	Liquid
Concentration	1mg/ml
Storage	Aliquot and store at -20°C (valid for 12 months). Avoid freeze/thaw cycles.
Shipping	Ice bags
Buffer	Liquid in PBS containing 50% glycerol, 0.5% protective protein and 0.02% New type preservative N.
Purification	Affinity purification

Application

Dilution Ratio	WB 1:500-1:2000,IHC 1:50-1:300,ELISA 1:2000-1:20000
Molecular Weight	36kDa

Antigen Information

Gene Name	IRF1
Alternative Names	IRF1; Interferon regulatory factor 1; IRF-1
Gene ID	3659.0
SwissProt ID	P10914
Immunogen	The antiserum was produced against synthesized peptide derived from the Internal region of human IRF1. AA range:91-140

Background

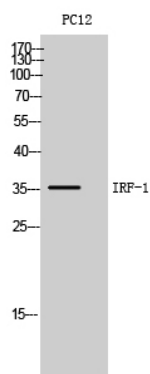
IRF1 encodes interferon regulatory factor 1, a member of the interferon regulatory transcription factor (IRF) family. IRF1 serves

as an activator of interferons alpha and beta transcription, and in mouse it has been shown to be required for double-stranded RNA induction of these genes. IRF1 also functions as a transcription activator of genes induced by interferons alpha, beta, and gamma. Further, IRF1 has been shown to play roles in regulating apoptosis and tumor-suppression. [provided by RefSeq, Jul 2008],disease:Deletion or rearrangement of IRF1 are a cause of preleukemic myelodysplastic syndrome (MDS) and of acute myelogenous leukemia (AML),function:Specifically binds to the upstream regulatory region of type I IFN and IFN-inducible MHC class I genes (the interferon consensus sequence (ICS)) and activates those genes. Acts as a tumor suppressor.,induction:By viruses and IFN.,PTM:Sumoylation represses the transcriptional activity and displays enhanced resistance to protein degradation. Inactivates the tumor suppressor activity. Elevated levels in tumor cells. Major site is Lys-275. Sumoylation is enhanced by PIAS3 (By similarity). Desumoylated by SENP1 in tumor cells and appears to compete with ubiquitination on C-terminal sites.,PTM:Ubiquitinated. Appears to compete with sumoylation on C-terminal sites.,similarity:Belongs to the IRF family.,similarity:Contains 1 tryptophan pentad repeat DNA-binding domain.,

Research Area

Epigenetics and Nuclear Signaling

Image Data



Western Blot analysis of PC12 cells using IRF-1 Polyclonal Antibody.. Secondary antibody was diluted at 1:20000.