

Product Name: Involucrin Rabbit Polyclonal Antibody**Catalog #: APRab12691**

For research use only.

Summary

Description	Rabbit polyclonal Antibody
Host	Rabbit
Application	WB,IHC,ICC/IF,ELISA
Reactivity	Human,Rat,Mouse
Conjugation	Unconjugated
Modification	Unmodified
Isotype	IgG
Clonality	Polyclonal
Form	Liquid
Concentration	1mg/ml
Storage	Aliquot and store at -20°C (valid for 12 months). Avoid freeze/thaw cycles.
Shipping	Ice bags
Buffer	Liquid in PBS containing 50% glycerol, 0.5% protective protein and 0.02% New type preservative N.
Purification	Affinity purification

Application

Dilution Ratio	WB 1:500-1:2000,IHC 1:100-1:300,ICC/IF 1:50-1:200,ELISA 1:10000-1:20000
Molecular Weight	68kDa

Antigen Information

Gene Name	IVL
Alternative Names	IVL; Involucrin
Gene ID	3713.0
SwissProt ID	P07476
Immunogen	The antiserum was produced against synthesized peptide derived from human Involucrin. AA range:536-585

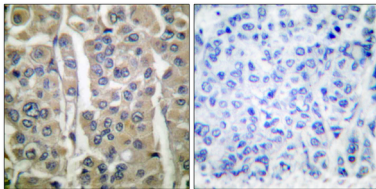
Background

involucrin(IVL) Homo sapiens Involucrin, a component of the keratinocyte crosslinked envelope, is found in the cytoplasm and

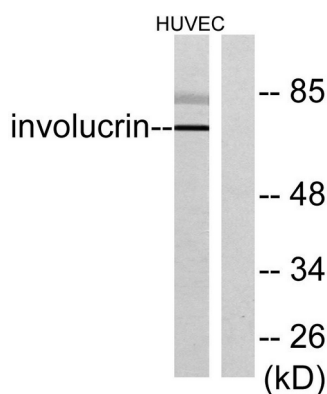
crosslinked to membrane proteins by transglutaminase. This gene is mapped to 1q21, among calpactin I light chain, trichohyalin, profilaggrin, loricrin, and calcyclin. [provided by RefSeq, Jul 2008],function:Part of the insoluble cornified cell envelope (CE) of stratified squamous epithelia.,PTM:Substrate of transglutaminase. Some glutamines and lysines are cross-linked to other involucrin molecules, to other proteins such as keratin, desmoplakin, periplakin and envoplakin, and to lipids like omega-hydroxyceramide.,similarity:Belongs to the involucrin family.,subcellular location:Constituent of the scaffolding of the cornified envelope.,subunit:Directly or indirectly cross-linked to cornifelin (CNFN).,tissue specificity:Keratinocytes of epidermis and other stratified squamous epithelia.,

Research Area

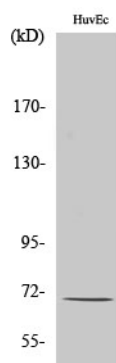
Image Data



Immunohistochemistry analysis of paraffin-embedded human breast carcinoma tissue, using Involucrin Antibody. The picture on the right is blocked with the synthesized peptide.



Western blot analysis of lysates from HUVEC cells, using Involucrin Antibody. The lane on the right is blocked with the synthesized peptide.



Western Blot analysis of various cells using Involucrin Polyclonal Antibody