

**Product Name: Insulin R Rabbit Polyclonal Antibody****Catalog #: APRab12637**

For research use only.

**Summary**

<b>Description</b>	Rabbit polyclonal Antibody
<b>Host</b>	Rabbit
<b>Application</b>	WB,IHC,ICC/IF,ELISA
<b>Reactivity</b>	Human,Rat,Mouse,Other
<b>Conjugation</b>	Unconjugated
<b>Modification</b>	Unmodified
<b>Isotype</b>	IgG
<b>Clonality</b>	Polyclonal
<b>Form</b>	Liquid
<b>Concentration</b>	1mg/ml
<b>Storage</b>	Aliquot and store at -20°C (valid for 12 months). Avoid freeze/thaw cycles.
<b>Shipping</b>	Ice bags
<b>Buffer</b>	Liquid in PBS containing 50% glycerol, 0.5% protective protein and 0.02% New type preservative N.
<b>Purification</b>	Affinity purification

**Application**

<b>Dilution Ratio</b>	WB 1:500-1:2000,IHC 1:100-1:300,ICC/IF 1:200-1:1000,ELISA 1:5000-1:10000
<b>Molecular Weight</b>	155kDa

**Antigen Information**

<b>Gene Name</b>	INSR
<b>Alternative Names</b>	INSR; Insulin receptor; IR; CD antigen CD220
<b>Gene ID</b>	3643.0
<b>SwissProt ID</b>	P06213
<b>Immunogen</b>	The antiserum was produced against synthesized peptide derived from human IR. AA range:1326-1375

**Background**

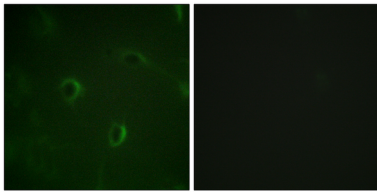
This receptor binds insulin-like growth factor with a high affinity. It has tyrosine kinase activity. The insulin-like growth factor I

receptor plays a critical role in transformation events. Cleavage of the precursor generates alpha and beta subunits. It is highly overexpressed in most malignant tissues where it functions as an anti-apoptotic agent by enhancing cell survival. Alternatively spliced transcript variants encoding distinct isoforms have been found for this gene. [provided by RefSeq, May 2014]

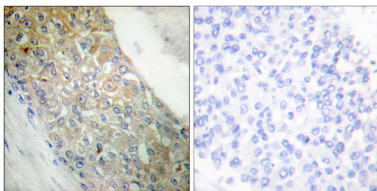
## Research Area

Regulation of Actin Dynamics; Insulin Receptor; AMPK; Adherens\_Junction

## Image Data



Immunofluorescence analysis of HUVEC cells, using IR Antibody. The picture on the right is blocked with the synthesized peptide.



Immunohistochemistry analysis of paraffin-embedded human breast carcinoma tissue, using IR Antibody. The picture on the right is blocked with the synthesized peptide.