

---

**Product Name: Inhibin  $\beta$ -B Rabbit Polyclonal Antibody****Catalog #: APRab12614**

For research use only.

**Summary**

<b>Description</b>	Rabbit polyclonal Antibody
<b>Host</b>	Rabbit
<b>Application</b>	WB,IHC,ICC/IF,ELISA
<b>Reactivity</b>	Human,Mouse,Rat
<b>Conjugation</b>	Unconjugated
<b>Modification</b>	Unmodified
<b>Isotype</b>	IgG
<b>Clonality</b>	Polyclonal
<b>Form</b>	Liquid
<b>Concentration</b>	1mg/ml
<b>Storage</b>	Aliquot and store at -20°C (valid for 12 months). Avoid freeze/thaw cycles.
<b>Shipping</b>	Ice bags
<b>Buffer</b>	Liquid in PBS containing 50% glycerol, 0.5% protective protein and 0.02% New type preservative N.
<b>Purification</b>	Affinity purification

**Application**

<b>Dilution Ratio</b>	WB 1:500-1:2000,IHC 1:100-1:300,ICC/IF 1:50-1:200,ELISA 1:10000-1:20000
<b>Molecular Weight</b>	45kDa

**Antigen Information**

<b>Gene Name</b>	INHBB
<b>Alternative Names</b>	INHBB; Inhibin beta B chain; Activin beta-B chain
<b>Gene ID</b>	3625.0
<b>SwissProt ID</b>	P09529
<b>Immunogen</b>	Synthesized peptide derived from Inhibin beta B chain at AA range: 351-400

**Background**

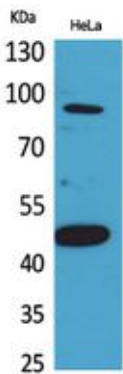
This gene encodes a member of the TGF-beta (transforming growth factor-beta) superfamily of proteins. The encoded preproprotein is proteolytically processed to generate a subunit of the dimeric activin and inhibin protein complexes. These

complexes activate and inhibit, respectively, follicle stimulating hormone secretion from the pituitary gland. Polymorphisms near this gene are associated with pre-eclampsia in female human patients. [provided by RefSeq, Aug 2016],function:Inhibins and activins inhibit and activate, respectively, the secretion of follitropin by the pituitary gland. Inhibins/activins are involved in regulating a number of diverse functions such as hypothalamic and pituitary hormone secretion, gonadal hormone secretion, germ cell development and maturation, erythroid differentiation, insulin secretion, nerve cell survival, embryonic axial development or bone growth, depending on their subunit composition. Inhibins appear to oppose the functions of activins.,online information:Inhibin entry,similarity:Belongs to the TGF-beta family.,subunit:Dimeric, linked by one or more disulfide bonds. Inhibin A is a dimer of alpha and beta-A. Inhibin B is a dimer of alpha and beta-B. Activin A is a homodimer of beta-A. Activin B is a homodimer of beta-B. Activin AB is a dimer of beta-A and beta-B.,

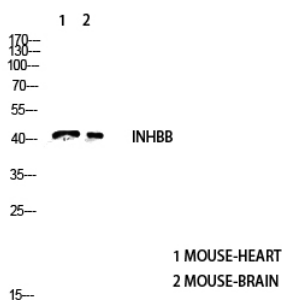
## Research Area

Cytokine-cytokine receptor interaction;TGF-beta;

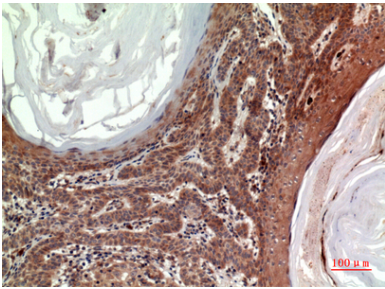
## Image Data



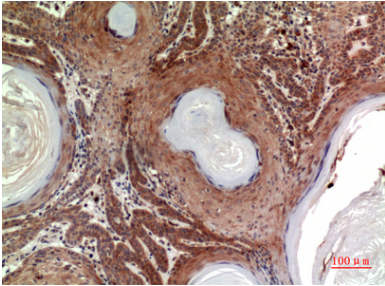
Western Blot analysis of HeLa cells using Inhibin  $\beta$ -B Polyclonal Antibody. Antibody was diluted at 1:2000. Secondary antibody was diluted at 1:20000



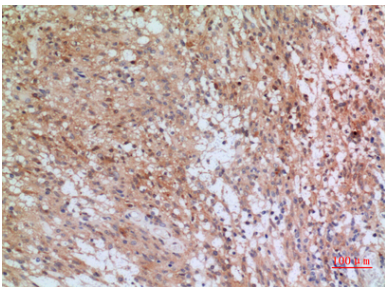
Western blot analysis of BD-PT5408wb4147442094 lysis using INHBB Antibody antibody. Antibody was diluted at 1:2000. Secondary antibody was diluted at 1:20000



Immunohistochemical analysis of paraffin-embedded human-skin, antibody was diluted at 1:100



Immunohistochemical analysis of paraffin-embedded human-skin, antibody was diluted at 1:100



Immunohistochemical analysis of paraffin-embedded human-brain, antibody was diluted at 1:100