

**Product Name: Imp3 Rabbit Polyclonal Antibody****Catalog #: APRab12591**

For research use only.

**Summary**

<b>Description</b>	Rabbit polyclonal Antibody
<b>Host</b>	Rabbit
<b>Application</b>	WB,ELISA
<b>Reactivity</b>	Human,Mouse,Rat
<b>Conjugation</b>	Unconjugated
<b>Modification</b>	Unmodified
<b>Isotype</b>	IgG
<b>Clonality</b>	Polyclonal
<b>Form</b>	Liquid
<b>Concentration</b>	1mg/ml
<b>Storage</b>	Aliquot and store at -20°C (valid for 12 months). Avoid freeze/thaw cycles.
<b>Shipping</b>	Ice bags
<b>Buffer</b>	Liquid in PBS containing 50% glycerol, 0.5% protective protein and 0.02% New type preservative N.
<b>Purification</b>	Affinity purification

**Application**

<b>Dilution Ratio</b>	WB 1:500-1:2000,ELISA 1:10000-1:20000
<b>Molecular Weight</b>	25kDa

**Antigen Information**

<b>Gene Name</b>	IMP3/C15orf12/MRPS4
<b>Alternative Names</b>	IMP3 C15orf12 MRPS4
<b>Gene ID</b>	55272.0
<b>SwissProt ID</b>	Q9NV31
<b>Immunogen</b>	Synthetic peptide from human protein at AA range: 135-184

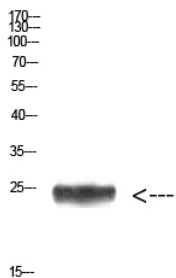
**Background**

This gene encodes the human homolog of the yeast Imp3 protein. The protein localizes to the nucleoli and interacts with the U3 snoRNP complex. The protein contains an S4 domain. [provided by RefSeq, Jul 2008],function:Component of the 60-80S U3

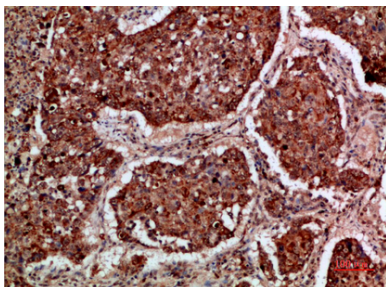
small nucleolar ribonucleoprotein (U3 snoRNP). Required for the early cleavages during pre-18S ribosomal RNA processing.,similarity:Belongs to the ribosomal protein S4P family.,similarity:Contains 1 S4 RNA-binding domain.,subunit:Component of a heterotrimeric complex containing IMP3, IMP4 and MPHOSPH10. Interacts with MPHOSPH10.,

## Research Area

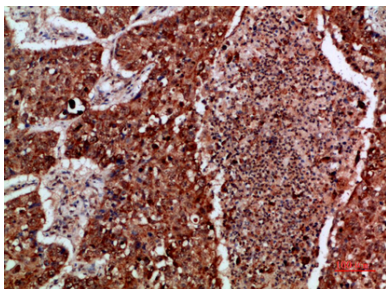
## Image Data



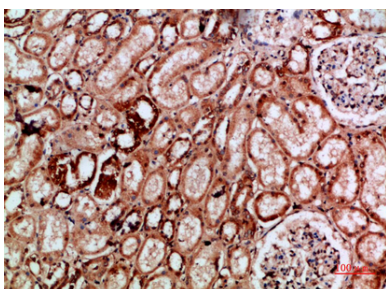
Western Blot analysis of HEPG2 cells using Antibody diluted at 1000. Secondary antibody was diluted at 1:20000



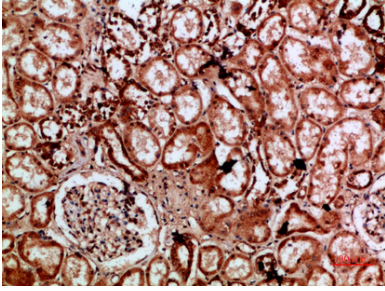
Immunohistochemical analysis of paraffin-embedded human-lung-cancer, antibody was diluted at 1:2000



Immunohistochemical analysis of paraffin-embedded human-lung-cancer, antibody was diluted at 1:200



Immunohistochemical analysis of paraffin-embedded human-kidney, antibody was diluted at 1:200



Immunohistochemical analysis of paraffin-embedded human-kidney, antibody was diluted at 1:200