

---

**Product Name: IL-3R $\beta$  Rabbit Polyclonal Antibody****Catalog #: APRab12557**

For research use only.

**Summary**

<b>Description</b>	Rabbit polyclonal Antibody
<b>Host</b>	Rabbit
<b>Application</b>	WB,IHC,ICC/IF,ELISA
<b>Reactivity</b>	Human,Mouse,Rat
<b>Conjugation</b>	Unconjugated
<b>Modification</b>	Unmodified
<b>Isotype</b>	IgG
<b>Clonality</b>	Polyclonal
<b>Form</b>	Liquid
<b>Concentration</b>	1mg/ml
<b>Storage</b>	Aliquot and store at -20°C (valid for 12 months). Avoid freeze/thaw cycles.
<b>Shipping</b>	Ice bags
<b>Buffer</b>	Liquid in PBS containing 50% glycerol, 0.5% protective protein and 0.02% New type preservative N.
<b>Purification</b>	Affinity purification

**Application**

<b>Dilution Ratio</b>	WB 1:500-1:2000,IHC 1:100-1:300,ICC/IF 1:50-1:200,ELISA 1:5000-1:10000
<b>Molecular Weight</b>	125kDa

**Antigen Information**

<b>Gene Name</b>	CSF2RB
<b>Alternative Names</b>	CSF2RB; IL3RB; IL5RB; Cytokine receptor common subunit beta; CDw131; GM-CSF/IL-3/IL-5 receptor common beta subunit; CD antigen CD131
<b>Gene ID</b>	1439.0
<b>SwissProt ID</b>	P32927
<b>Immunogen</b>	The antiserum was produced against synthesized peptide derived from human IL-3R beta. AA range:559-608

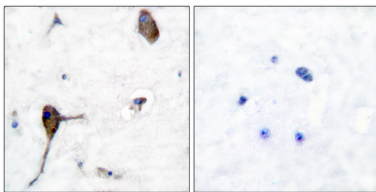
**Background**

The protein encoded by this gene is the common beta chain of the high affinity receptor for IL-3, IL-5 and CSF. Defects in this gene have been reported to be associated with protein alveolar proteinosis (PAP). [provided by RefSeq, Jul 2008],disease:Defects in CSF2RB are a cause of congenital pulmonary alveolar proteinosis (PAP) [MIM:265120]. PAP is an autosomal recessive fatal respiratory disease.,domain:The box 1 motif is required for JAK interaction and/or activation.,domain:The WSXWS motif appears to be necessary for proper protein folding and thereby efficient intracellular transport and cell-surface receptor binding.,function:High affinity receptor for interleukin-3, interleukin-5 and granulocyte-macrophage colony-stimulating factor.,similarity:Belongs to the type I cytokine receptor family. Type 4 subfamily.,similarity:Contains 2 fibronectin type-III domains.,subunit:Heterodimer of an alpha and a beta subunit. The beta subunit is common to the IL3, IL5 and GM-CSF receptors.,

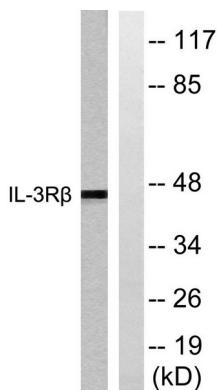
## Research Area

Cytokine-cytokine receptor interaction;Apoptosis\_Inhibition;Apoptosis\_Mitochondrial;Apoptosis\_Overview;Jak\_STAT;

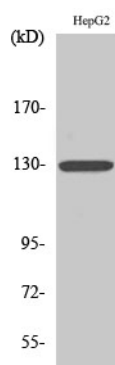
## Image Data



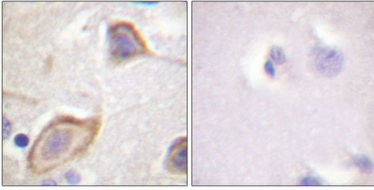
Immunohistochemistry analysis of paraffin-embedded human brain tissue, using IL-3R beta Antibody. The picture on the right is blocked with the synthesized peptide.



Western blot analysis of lysates from Raw264.7 cells, treated with G-CSF 25ng/ml 15 ', using IL-3R beta Antibody. The lane on the right is blocked with the synthesized peptide.



Western Blot analysis of various cells using IL-3Rβ Polyclonal Antibody



Immunohistochemical analysis of paraffin-embedded Human brain. Antibody was diluted at 1:100 (4°,overnight) . High-pressure and temperature Tris-EDTA,pH8.0 was used for antigen retrieval. Negative contrl (right) obtaned from antibody was pre-absorbed by immunogen peptide.