

**Product Name: IL-33 Rabbit Polyclonal Antibody****Catalog #: APRab12554**

For research use only.

**Summary**

|                      |   |
|----------------------|---|
| <b>Description</b>   | Rabbit polyclonal Antibody  |
| <b>Host</b>          | Rabbit  |
| <b>Application</b>   | WB,IHC,ICC/IF,ELISA   |
| <b>Reactivity</b>    | Human,Rat,Mouse   |
| <b>Conjugation</b>   | Unconjugated  |
| <b>Modification</b>  | Unmodified  |
| <b>Isotype</b>       | IgG   |
| <b>Clonality</b>     | Polyclonal  |
| <b>Form</b>          | Liquid  |
| <b>Concentration</b> | 1mg/ml  |
| <b>Storage</b>       | Aliquot and store at -20°C (valid for 12 months). Avoid freeze/thaw cycles.                       |
| <b>Shipping</b>      | Ice bags  |
| <b>Buffer</b>        | Liquid in PBS containing 50% glycerol, 0.5% protective protein and 0.02% New type preservative N. |
| <b>Purification</b>  | Affinity purification   |

**Application**

|                         |   |
|-------------------------|---|
| <b>Dilution Ratio</b>   | WB 1:500-1:2000,IHC 1:100-1:300,ICC/IF 1:50-1:200,ELISA 1:10000-1:20000 |
| <b>Molecular Weight</b> | 31kDa   |

**Antigen Information**

|                          |  |
|--------------------------|--|
| <b>Gene Name</b>         | IL33   |
| <b>Alternative Names</b> | IL33; C9orf26; IL1F11; NFHEV; Interleukin-33; IL-33; Interleukin-1 family member 11; IL-1F11; Nuclear factor from high endothelial venules; NF-HEV |
| <b>Gene ID</b>           | 90865.0  |
| <b>SwissProt ID</b>      | O95760   |
| <b>Immunogen</b>         | The antiserum was produced against synthesized peptide derived from the Internal region of human IL33. AA range:121-170                            |

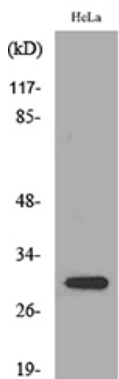
**Background**

The protein encoded by this gene is a cytokine that binds to the IL1RL1/ST2 receptor. The encoded protein is involved in the maturation of Th2 cells and the activation of mast cells, basophils, eosinophils and natural killer cells. Several transcript variants encoding different isoforms have been found for this gene. [provided by RefSeq, Sep 2015], caution: Was originally (PubMed:12819012) thought to one of the key factors that controls the specialized post-capillary high endothelial venules (HEV) phenotype found in organized secondary lymphoid tissue and to be nuclear localized., function: Cytokine that binds to and signals through IL1RL1/ST2 and its stimulation recruits MYD88, IRAK1, IRAK4, and TRAF6, followed by phosphorylation of MAPK3/ERK1 and/or MAPK1/ERK2, MAPK14, and MAPK8. Induces T helper type 2-associated cytokines., PTM: Proteolytically converted to a mature form by CASP1., similarity: Belongs to the IL-1 family. Highly divergent., tissue specificity: Expressed at high level in high endothelial venules found in tonsils, Peyer patches and mesenteric lymph nodes. Almost undetectable in placenta.,

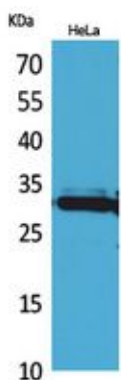
## Research Area

Cytosolic DNA-sensing pathway;

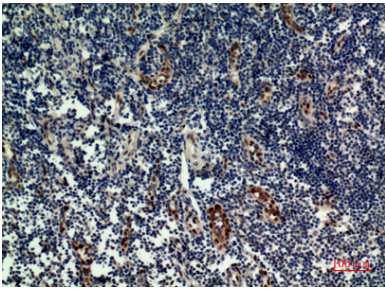
## Image Data



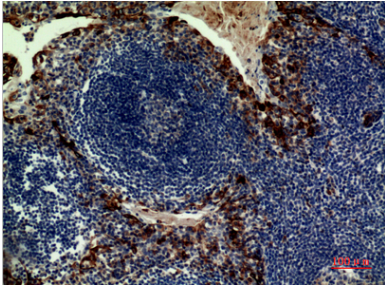
Western blot analysis of lysate from HeLa cells, using IL33 Antibody.



Western Blot analysis of HeLa cells using IL-33 Polyclonal Antibody.. Secondary antibody was diluted at 1:20000



Immunohistochemical analysis of paraffin-embedded human-tonsilla, antibody was diluted at 1:100



Immunohistochemical analysis of paraffin-embedded human-tonsilla, antibody was diluted at 1:100