
Product Name: IL-2R α Rabbit Polyclonal Antibody**Catalog #: APRab12547**

For research use only.

Summary

Description	Rabbit polyclonal Antibody
Host	Rabbit
Application	WB,ICC/IF,ELISA
Reactivity	Human,Rat,Mouse
Conjugation	Unconjugated
Modification	Unmodified
Isotype	IgG
Clonality	Polyclonal
Form	Liquid
Concentration	1mg/ml
Storage	Aliquot and store at -20°C (valid for 12 months). Avoid freeze/thaw cycles.
Shipping	Ice bags
Buffer	Liquid in PBS containing 50% glycerol, 0.5% protective protein and 0.02% New type preservative N.
Purification	Affinity purification

Application

Dilution Ratio	WB 1:500-1:2000,ICC/IF 1:200-1:1000,ELISA 1:10000-1:20000
Molecular Weight	55kDa

Antigen Information

Gene Name	IL2RA
Alternative Names	IL2RA; Interleukin-2 receptor subunit alpha; IL-2 receptor subunit alpha; IL-2-RA; IL-2R subunit alpha; IL2-RA; TAC antigen; p55; CD antigen CD25
Gene ID	3559.0
SwissProt ID	P01589
Immunogen	The antiserum was produced against synthesized peptide derived from human IL-2R alpha/CD25. AA range:223-272

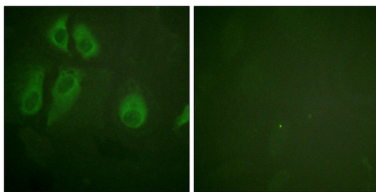
Background

The interleukin 2 (IL2) receptor alpha (IL2RA) and beta (IL2RB) chains, together with the common gamma chain (IL2RG), constitute the high-affinity IL2 receptor. Homodimeric alpha chains (IL2RA) result in low-affinity receptor, while homodimeric beta (IL2RB) chains produce a medium-affinity receptor. Normally an integral-membrane protein, soluble IL2RA has been isolated and determined to result from extracellular proteolysis. Alternately-spliced IL2RA mRNAs have been isolated, but the significance of each is presently unknown. Mutations in this gene are associated with interleukin 2 receptor alpha deficiency. [provided by RefSeq, Nov 2009],disease:Genetic variations in IL2RA are associated with susceptibility to insulin-dependent diabetes mellitus type 10 (IDDM10) [MIM:601942].,function:Receptor for interleukin-2.,online information:IL2RA mutation db,similarity:Contains 2 Sushi (CCP/SCR) domains.,subunit:Non-covalent dimer of an alpha and a beta chains. IL2R exists in 3 different forms: a high affinity dimer, an intermediate affinity monomer (beta chain), and a low affinity monomer (alpha chain). The high and intermediate affinity forms also associate with a gamma chain.,

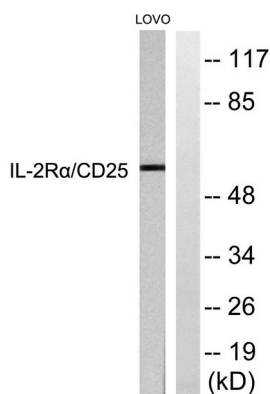
Research Area

Cytokine-cytokine receptor interaction;Endocytosis;Jak_STAT;Hematopoietic cell lineage;

Image Data



Immunofluorescence analysis of HeLa cells, using IL-2R alpha/CD25 Antibody. The picture on the right is blocked with the synthesized peptide.



Western blot analysis of lysates from LOVO cells, using IL-2R alpha/CD25 Antibody. The lane on the right is blocked with the synthesized peptide.