
Product Name: IL-26 Rabbit Polyclonal Antibody**Catalog #: APRab12541**

For research use only.

Summary

Description	Rabbit polyclonal Antibody
Host	Rabbit
Application	WB,ELISA
Reactivity	Human,Rat,Mouse
Conjugation	Unconjugated
Modification	Unmodified
Isotype	IgG
Clonality	Polyclonal
Form	Liquid
Concentration	1mg/ml
Storage	Aliquot and store at -20°C (valid for 12 months). Avoid freeze/thaw cycles.
Shipping	Ice bags
Buffer	Liquid in PBS containing 50% glycerol, 0.5% protective protein and 0.02% New type preservative N.
Purification	Affinity purification

Application

Dilution Ratio	WB 1:500-1:2000,ELISA 1:5000-1:20000
Molecular Weight	25kDa

Antigen Information

Gene Name	IL26
Alternative Names	IL26; AK155; Interleukin-26; IL-26; Protein AK155
Gene ID	55801.0
SwissProt ID	Q9NPH9
Immunogen	Synthesized peptide derived from Interleukin-26 at AA range: 21-70

Background

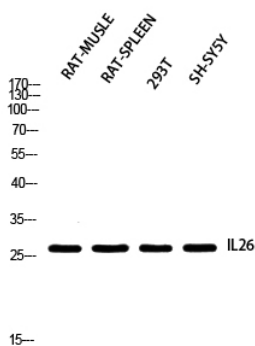
This gene was identified by its overexpression specifically in herpesvirus samimiri-transformed T cells. The encoded protein is a member of the IL10 family of cytokines. It is a secreted protein and may function as a homodimer. This protein is thought to

contribute to the transformed phenotype of T cells after infection by herpesvirus saimiri. [provided by RefSeq, Jul 2008],induction:By Herpesvirus saimiri infection.,online information:Interleukin-26 entry,similarity:Belongs to the IL-10 family.,subunit:Homodimer.,tissue specificity:Expressed in HVS transformed T-cells but not other T-cell lines or primary stimulated T-cells.,

Research Area

Cytokine-cytokine receptor interaction;Jak_STAT;

Image Data



Western blot analysis of RAT-MUSCLE RAT-SPLEEN 293T SH-SY5Y using IL26 antibody. Antibody was diluted at 1:2000. Secondary antibody was diluted at 1:20000