

**Product Name: IL-20R $\alpha$  Rabbit Polyclonal Antibody****Catalog #: APRab12534**

For research use only.

**Summary**

<b>Description</b>	Rabbit polyclonal Antibody
<b>Host</b>	Rabbit
<b>Application</b>	WB,IHC,ICC/IF,ELISA
<b>Reactivity</b>	Human,Rat,Mouse
<b>Conjugation</b>	Unconjugated
<b>Modification</b>	Unmodified
<b>Isotype</b>	IgG
<b>Clonality</b>	Polyclonal
<b>Form</b>	Liquid
<b>Concentration</b>	1mg/ml
<b>Storage</b>	Aliquot and store at -20°C (valid for 12 months). Avoid freeze/thaw cycles.
<b>Shipping</b>	Ice bags
<b>Buffer</b>	Liquid in PBS containing 50% glycerol, 0.5% protective protein and 0.02% New type preservative N.
<b>Purification</b>	Affinity purification

**Application**

<b>Dilution Ratio</b>	WB 1:500-1:2000,IHC 1:100-1:300,ICC/IF 1:50-1:200,ELISA 1:20000-1:40000
<b>Molecular Weight</b>	62kDa

**Antigen Information**

<b>Gene Name</b>	IL20RA IL20RA; Interleukin-20 receptor subunit alpha; IL-20 receptor subunit alpha; IL-20R-alpha; IL-
<b>Alternative Names</b>	20RA; Cytokine receptor class-II member 8; Cytokine receptor family 2 member 8; CRF2-8; IL-20R1; ZcytoR7
<b>Gene ID</b>	53832.0
<b>SwissProt ID</b>	Q9UHF4
<b>Immunogen</b>	The antiserum was produced against synthesized peptide derived from human IL-20Ralpha. AA range:173-222

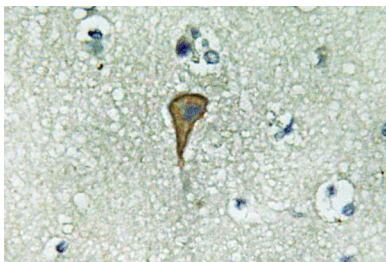
## Background

This gene encodes a member of the type II cytokine receptor family. The encoded protein is a subunit of the receptor for interleukin 20, a cytokine that may be involved in epidermal function. The interleukin 20 receptor is a heterodimeric complex consisting of the encoded protein and interleukin 20 receptor beta. This gene and interleukin 20 receptor beta are highly expressed in skin, and are upregulated in psoriasis. Alternative splicing results in multiple transcript variants. [provided by RefSeq, Jul 2013],function:The IL20RA/IL20RB dimer is a receptor for IL19, IL20 and IL24. The IL20RA/IL10RB dimer is a receptor for IL26.,similarity:Belongs to the type II cytokine receptor family.,similarity:Contains 2 fibronectin type-III domains.,subunit:Heterodimer with IL20RB and heterodimer with IL10RB.,tissue specificity:Widely expressed with highest levels in skin and testis and high levels in brain. Highly expressed in psoriatic skin.,

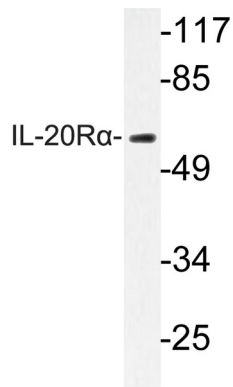
## Research Area

Cytokine-cytokine receptor interaction;Jak\_STAT;

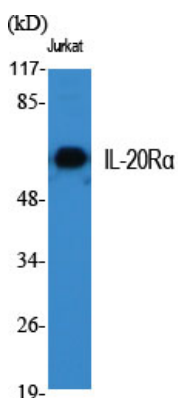
## Image Data



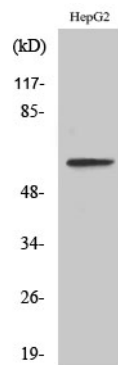
Immunohistochemistry analysis of IL-20R $\alpha$  antibody in paraffin-embedded human brain tissue.



Western blot analysis of lysate from HepG2 cells, using IL-20R $\alpha$  antibody.



Western Blot analysis of various cells using IL-20R $\alpha$  Polyclonal Antibody



Western Blot analysis of LOVO cells using IL-20R $\alpha$  Polyclonal Antibody