
Product Name: IL-20 Rabbit Polyclonal Antibody**Catalog #: APRab12533**

For research use only.

Summary

Description	Rabbit polyclonal Antibody
Host	Rabbit
Application	IHC,ICC/IF,ELISA
Reactivity	Human,Mouse,Rat
Conjugation	Unconjugated
Modification	Unmodified
Isotype	IgG
Clonality	Polyclonal
Form	Liquid
Concentration	1mg/ml
Storage	Aliquot and store at -20°C (valid for 12 months). Avoid freeze/thaw cycles.
Shipping	Ice bags
Buffer	Liquid in PBS containing 50% glycerol, 0.5% protective protein and 0.02% New type preservative N.
Purification	Affinity purification

Application

Dilution Ratio IHC 1:50-1:200,ICC/IF 1:50-1:200,ELISA 1:10000-1:20000

Molecular Weight

Antigen Information

Gene Name	IL20
Alternative Names	Interleukin-20 (IL-20;Cytokine Zcyto10)
Gene ID	50604.0
SwissProt ID	Q9NYY1
Immunogen	Synthetic peptide from human protein at AA range: 81-130

Background

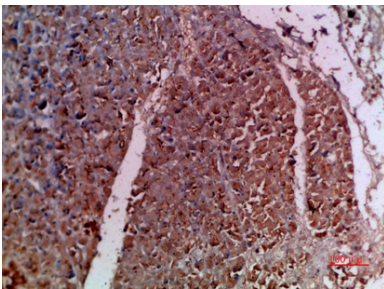
The protein encoded by this gene is a cytokine structurally related to interleukin 10 (IL10). This cytokine has been shown to transduce its signal through signal transducer and activator of transcription 3 (STAT3) in keratinocytes. A specific receptor for

this cytokine is found to be expressed in skin and upregulated dramatically in psoriatic skin, suggesting a role for this protein in epidermal function and psoriasis. [provided by RefSeq, Jul 2008],function:Cytokine that may be involved in epidermal function and psoriasis. Acts through STAT3.,similarity:Belongs to the IL-10 family.,tissue specificity:Expressed at very low levels in skin, trachea, and other tissues.,

Research Area

Cytokine-cytokine receptor interaction;Jak_STAT;

Image Data



Immunohistochemical analysis of paraffin-embedded human-pancreas, antibody was diluted at 1:200