
Product Name: IL-1F6 Rabbit Polyclonal Antibody**Catalog #: APRab12520**

For research use only.

Summary

Description	Rabbit polyclonal Antibody
Host	Rabbit
Application	IHC,ICC/IF,ELISA
Reactivity	Human,Rat,Mouse
Conjugation	Unconjugated
Modification	Unmodified
Isotype	IgG
Clonality	Polyclonal
Form	Liquid
Concentration	1mg/ml
Storage	Aliquot and store at -20°C (valid for 12 months). Avoid freeze/thaw cycles.
Shipping	Ice bags
Buffer	Liquid in PBS containing 50% glycerol, 0.5% protective protein and 0.02% New type preservative N.
Purification	Affinity purification

Application

Dilution Ratio IHC 1:50-1:200,ICC/IF 1:50-1:200,ELISA 1:10000-1:20000

Molecular Weight

Antigen Information

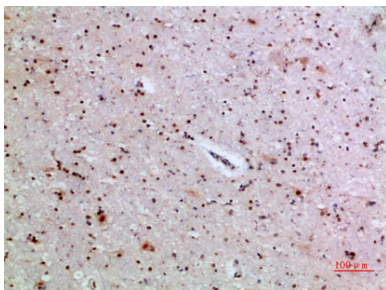
Gene Name	IL36A FIL1E IL1E IL1F6
Alternative Names	Interleukin-36 alpha (FIL1 epsilon;Interleukin-1 epsilon;IL-1 epsilon;Interleukin-1 family member 6;IL-1F6)
Gene ID	27179.0
SwissProt ID	Q9UHA7
Immunogen	The antiserum was produced against synthesized peptide derived from the Internal region of human IL36A. AA range:21-70

Background

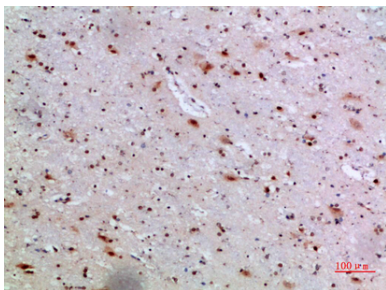
The protein encoded by this gene is a cytokine that can activate NF-kappa-B and MAPK signaling pathways to generate an inflammatory response. The encoded protein functions primarily in skin and demonstrates increased expression in psoriasis. In addition, decreased expression of this gene has been linked to a poor prognosis in both hepatocellular carcinoma and colorectal cancer patients. [provided by RefSeq, Nov 2015],miscellaneous:Binding analysis failed to detect interaction with multiple IL1R family members.,online information:Interleukin-1 entry,similarity:Belongs to the IL-1 family.,tissue specificity:Expressed in immune system and fetal brain, but not in other tissues tested or in multiple hematopoietic cell lines.,

Research Area

Image Data



Immunohistochemical analysis of paraffin-embedded human-brain, antibody was diluted at 1:200



Immunohistochemical analysis of paraffin-embedded human-brain, antibody was diluted at 1:200