

Product Name: IL-1F5 Rabbit Polyclonal Antibody**Catalog #: APRab12519**

For research use only.

Summary

Description	Rabbit polyclonal Antibody
Host	Rabbit
Application	WB,ELISA
Reactivity	Human,Mouse,Rat
Conjugation	Unconjugated
Modification	Unmodified
Isotype	IgG
Clonality	Polyclonal
Form	Liquid
Concentration	1mg/ml
Storage	Aliquot and store at -20°C (valid for 12 months). Avoid freeze/thaw cycles.
Shipping	Ice bags
Buffer	Liquid in PBS containing 50% glycerol, 0.5% protective protein and 0.02% New type preservative N.
Purification	Affinity purification

Application

Dilution Ratio	WB 1:500-1:2000,ELISA 1:5000-1:20000
Molecular Weight	17kDa

Antigen Information

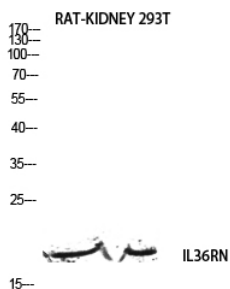
Gene Name	IL36RN
Alternative Names	IL36RN; FIL1D; IL1F5; IL1HY1; IL1L1; IL1RP3; Interleukin-36 receptor antagonist protein; FIL1 delta; IL-1-related protein 3; IL-1RP3; Interleukin-1 HY1; IL-1HY1; Interleukin-1 delta; IL-1 delta; Interleukin-1 family member 5; IL-1F5; Interleukin-1 receptor antagonist homolog 1; IL-1ra homolog 1; Interleukin-1-like protein 1; IL-1L1
Gene ID	26525.0
SwissProt ID	Q9UBH0
Immunogen	The antiserum was produced against synthesized peptide derived from the Internal region of human IL36RN. AA range:1-50

Background

The protein encoded by this gene is a member of the interleukin 1 cytokine family. This cytokine was shown to specifically inhibit the activation of NF-kappaB induced by interleukin 1 family, member 6 (IL1F6). This gene and eight other interleukin 1 family genes form a cytokine gene cluster on chromosome 2. Two alternatively spliced transcript variants encoding the same protein have been reported. [provided by RefSeq, Jul 2008],function:Is a highly and a specific antagonist of the IL-1 receptor-related protein 2-mediated response to interleukin 1 family member 9 (IL1F9). Could constitute part of an independent signaling system analogous to interleukin-1 alpha (IL-1A), beta (IL-1B) receptor agonist and interleukin-1 receptor type I (IL-1R1), that is present in epithelial barriers and takes part in local inflammatory response.,induction:By phorbol ester (PMA) and lipopolysaccharide (LPS) treatment in macrophage cell line.,online information:Interleukin-1 entry,similarity:Belongs to the IL-1 family.,tissue specificity:Predominantly expressed in keratinocytes but not in fibroblasts, endothelial cells or melanocytes. Detected also in the spleen, brain leukocyte and macrophage cell types. Increased in lesional psoriasis skin.,

Research Area

Image Data



Western blot analysis of RAT-KIDNEY 293T lysis using IL36RN antibody. Antibody was diluted at 1:500. Secondary antibody was diluted at 1:20000