

---

**Product Name: IL-1F10 Rabbit Polyclonal Antibody****Catalog #: APRab12518**

For research use only.

**Summary**

<b>Description</b>	Rabbit polyclonal Antibody
<b>Host</b>	Rabbit
<b>Application</b>	WB,IHC,ICC/IF,ELISA
<b>Reactivity</b>	Human,Rat,Mouse
<b>Conjugation</b>	Unconjugated
<b>Modification</b>	Unmodified
<b>Isotype</b>	IgG
<b>Clonality</b>	Polyclonal
<b>Form</b>	Liquid
<b>Concentration</b>	1mg/ml
<b>Storage</b>	Aliquot and store at -20°C (valid for 12 months). Avoid freeze/thaw cycles.
<b>Shipping</b>	Ice bags
<b>Buffer</b>	Liquid in PBS containing 50% glycerol, 0.5% protective protein and 0.02% New type preservative N.
<b>Purification</b>	Affinity purification

**Application**

<b>Dilution Ratio</b>	WB 1:500-1:2000,IHC 1:100-1:300,ICC/IF 1:50-1:200,ELISA 1:5000-1:20000
<b>Molecular Weight</b>	17kDa

**Antigen Information**

<b>Gene Name</b>	IL1F10
<b>Alternative Names</b>	IL1F10; FIL1T; IL1HY2; FKSG75; Interleukin-1 family member 10; IL-1F10; FIL1 theta; Interleukin-1 HY2; IL-1HY2; Interleukin-1 theta; IL-1 theta
<b>Gene ID</b>	84639.0
<b>SwissProt ID</b>	Q8WWZ1
<b>Immunogen</b>	Synthesized peptide derived from Interleukin-1 family member 10 at AA range: 101-150

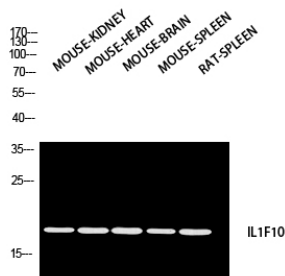
**Background**

The protein encoded by this gene is a member of the interleukin 1 cytokine family. This gene and eight other interleukin 1

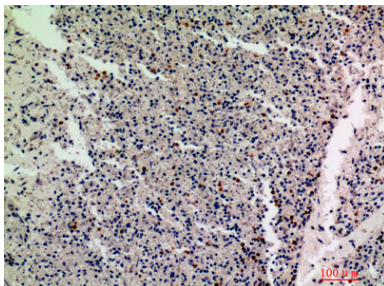
family genes form a cytokine gene cluster on chromosome 2. This cytokine is thought to participate in a network of interleukin 1 family members to regulate adapted and innate immune responses. Two alternatively spliced transcript variants encoding the same protein have been reported. [provided by RefSeq, Jul 2008],function: Binds soluble IL-1 receptor type 1.,online information: Interleukin-1 entry, similarity: Belongs to the IL-1 family., tissue specificity: Expressed in fetal skin, spleen and tonsil. Expressed mostly in the basal epithelia of skin and in proliferating B-cells of the tonsil,

## Research Area

## Image Data



Western blot analysis of MOUSE-KIDNEY MOUSE-HEART MOUSE-BRAIN MOUSE-SPLEEN RAT-SPLEEN using IL1F10 antibody. Antibody was diluted at 1:2000. Secondary antibody was diluted at 1:20000



Immunohistochemical analysis of paraffin-embedded human-spleen, antibody was diluted at 1:200