

Product Name: IL-19 Rabbit Polyclonal Antibody**Catalog #: APRab12516**

For research use only.

Summary

Description	Rabbit polyclonal Antibody
Host	Rabbit
Application	WB,IHC,ICC/IF,ELISA
Reactivity	Human,Rat
Conjugation	Unconjugated
Modification	Unmodified
Isotype	IgG
Clonality	Polyclonal
Form	Liquid
Concentration	1mg/ml
Storage	Aliquot and store at -20°C (valid for 12 months). Avoid freeze/thaw cycles.
Shipping	Ice bags
Buffer	Liquid in PBS containing 50% glycerol, 0.5% protective protein and 0.02% New type preservative N.
Purification	Affinity purification

Application

Dilution Ratio	WB 1:500-1:2000,IHC 1:50-1:200,ICC/IF 1:50-1:200,ELISA 1:10000-1:20000
Molecular Weight	20kDa

Antigen Information

Gene Name	IL19 ZMDA1
Alternative Names	Interleukin-19 (IL-19;Melanoma differentiation-associated protein-like protein;NG.1)
Gene ID	29949.0
SwissProt ID	Q9UHD0
Immunogen	Synthetic peptide from human protein at AA range: 51-100

Background

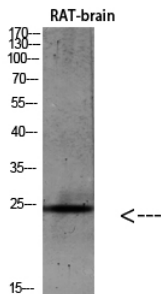
The protein encoded by this gene is a cytokine that belongs to the IL10 cytokine subfamily. This cytokine is found to be preferentially expressed in monocytes. It can bind the IL20 receptor complex and lead to the activation of the signal transducer

and activator of transcription 3 (STAT3). A similar cytokine in mouse is reported to up-regulate the expression of IL6 and TNF-alpha and induce apoptosis, which suggests a role of this cytokine in inflammatory responses. Alternatively spliced transcript variants encoding the distinct isoforms have been described. [provided by RefSeq, Jul 2008],function:May play some important roles in inflammatory responses. Up-regulates IL-6 and TNF-alpha and induces apoptosis.,similarity:Belongs to the IL-10 family.,

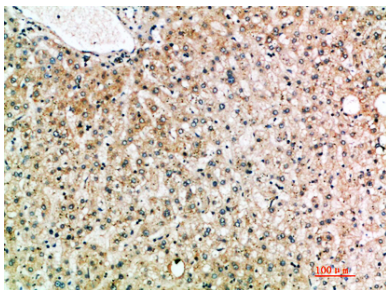
Research Area

Cytokine-cytokine receptor interaction;Jak_STAT;

Image Data



Western blot analysis of 293T Hela VEC KB mouse-kidney lysate, antibody was diluted at 500. Secondary antibody was diluted at 1:20000



Immunohistochemical analysis of paraffin-embedded human-liver, antibody was diluted at 1:200