

---

**Product Name: IL-18R Rabbit Polyclonal Antibody****Catalog #: APRab12515**

For research use only.

**Summary**

<b>Description</b>	Rabbit polyclonal Antibody
<b>Host</b>	Rabbit
<b>Application</b>	WB,ELISA
<b>Reactivity</b>	Human,Rat,Mouse
<b>Conjugation</b>	Unconjugated
<b>Modification</b>	Unmodified
<b>Isotype</b>	IgG
<b>Clonality</b>	Polyclonal
<b>Form</b>	Liquid
<b>Concentration</b>	1mg/ml
<b>Storage</b>	Aliquot and store at -20°C (valid for 12 months). Avoid freeze/thaw cycles.
<b>Shipping</b>	Ice bags
<b>Buffer</b>	Liquid in PBS containing 50% glycerol, 0.5% protective protein and 0.02% New type preservative N.
<b>Purification</b>	Affinity purification

**Application**

<b>Dilution Ratio</b>	WB 1:500-1:2000,ELISA 1:10000-1:20000
<b>Molecular Weight</b>	63kDa

**Antigen Information**

<b>Gene Name</b>	IL18R1
<b>Alternative Names</b>	IL18R1; IL1RRP; Interleukin-18 receptor 1; IL-18R-1; IL-18R1; CD218 antigen-like family member A; CDw218a; IL1 receptor-related protein; IL-1Rrp; IL1R-rp; CD218a
<b>Gene ID</b>	8809.0
<b>SwissProt ID</b>	Q13478
<b>Immunogen</b>	The antiserum was produced against synthesized peptide derived from the Internal region of human IL18R1. AA range:231-280

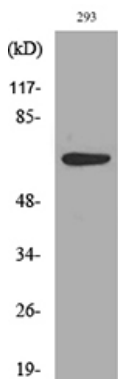
**Background**

The protein encoded by this gene is a cytokine receptor that belongs to the interleukin 1 receptor family. This receptor specifically binds interleukin 18 (IL18), and is essential for IL18 mediated signal transduction. IFN-alpha and IL12 are reported to induce the expression of this receptor in NK and T cells. This gene along with four other members of the interleukin 1 receptor family, including IL1R2, IL1R1, IL1R2 (IL-1Rrp2), and IL1RL1 (T1/ST2), form a gene cluster on chromosome 2q. Alternatively spliced transcript variants encoding different isoforms have been found for this gene. [provided by RefSeq, Sep 2013],function:Receptor for interleukin 18 (IL-18). Binding to the agonist leads to the activation of NF-kappa-B.,miscellaneous:Does not bind interleukin 1 alpha (IL-1A) or interleukin 1 beta (IL-1B),.similarity:Belongs to the interleukin-1 receptor family,.similarity:Contains 1 TIR domain,.similarity:Contains 3 Ig-like C2-type (immunoglobulin-like) domains,.tissue specificity:Expressed in lung, leukocytes, spleen, liver, thymus, prostate, small intestine, colon, placenta, and heart, and is absent from brain, skeletal muscle, pancreas, and kidney. High level of expression in Hodgkin's disease cell lines.,

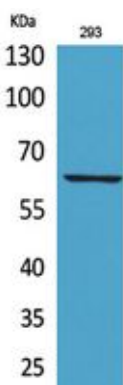
## Research Area

Cytokine-cytokine receptor interaction;

## Image Data



Western blot analysis of lysate from 293 cells, using IL18R1 Antibody.



Western Blot analysis of 293 cells using IL-18R Polyclonal Antibody.. Secondary antibody was diluted at 1:20000