

Product Name: IL-17D Rabbit Polyclonal Antibody**Catalog #: APRab12507**

For research use only.

Summary

Description	Rabbit polyclonal Antibody
Host	Rabbit
Application	IHC, ICC/IF, ELISA
Reactivity	Human, Rat, Mouse
Conjugation	Unconjugated
Modification	Unmodified
Isotype	IgG
Clonality	Polyclonal
Form	Liquid
Concentration	1mg/ml
Storage	Aliquot and store at -20°C (valid for 12 months). Avoid freeze/thaw cycles.
Shipping	Ice bags
Buffer	Liquid in PBS containing 50% glycerol, 0.5% protective protein and 0.02% New type preservative N.
Purification	Affinity purification

Application

Dilution Ratio IHC 1:50-1:200, ICC/IF 1:50-1:200, ELISA 1:10000-1:20000

Molecular Weight

Antigen Information

Gene Name	IL17D IL27 UNQ3096/PRO21175
Alternative Names	Interleukin-17D (IL-17D; Interleukin-27; IL-27)
Gene ID	53342.0
SwissProt ID	Q8TAD2
Immunogen	Synthetic peptide from human protein at AA range: 141-190

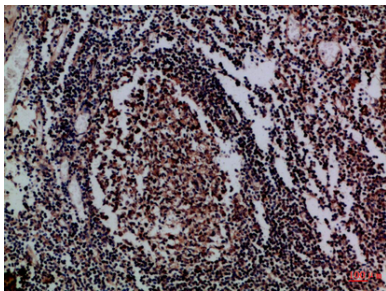
Background

The protein encoded by this gene is a cytokine that shares the sequence similarity with IL17. The treatment of endothelial cells with this cytokine has been shown to stimulate the production of other cytokines including IL6, IL8 and CSF2/ GM-CSF. The

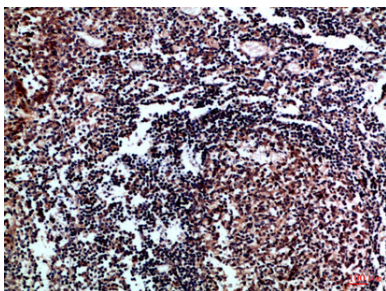
increased expression of IL8 induced by this cytokine was found to be NF-kappa B-dependent. [provided by RefSeq, Jul 2008],function:Induces expression of IL-6, IL-8, and GM-CSF from endothelial cells.,online information:Interleukin-17 entry,similarity:Belongs to the IL-17 family.,tissue specificity:Expressed preferentially in adipose, skeletal muscle and CNS.,

Research Area

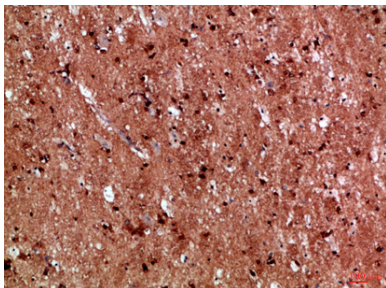
Image Data



Immunohistochemical analysis of paraffin-embedded Human-tonsil, antibody was diluted at 1:100



Immunohistochemical analysis of paraffin-embedded Human-tonsil, antibody was diluted at 1:100



Immunohistochemical analysis of paraffin-embedded Human-brain, antibody was diluted at 1:100