

Product Name: IL-13R α 1 Rabbit Polyclonal Antibody**Catalog #: APRab12498**

For research use only.

Summary

Description	Rabbit polyclonal Antibody
Host	Rabbit
Application	WB,IHC,ICC/IF,ELISA
Reactivity	Human,Mouse,Rat
Conjugation	Unconjugated
Modification	Unmodified
Isotype	IgG
Clonality	Polyclonal
Form	Liquid
Concentration	1mg/ml
Storage	Aliquot and store at -20°C (valid for 12 months). Avoid freeze/thaw cycles.
Shipping	Ice bags
Buffer	Liquid in PBS containing 50% glycerol, 0.5% protective protein and 0.02% New type preservative N.
Purification	Affinity purification

Application

Dilution Ratio	WB 1:500-1:2000,IHC 1:100-1:300,ICC/IF 1:200-1:1000,ELISA 1:5000-1:20000
Molecular Weight	49kDa

Antigen Information

Gene Name	IL13RA1 IL13RA1; IL13R; IL13RA; Interleukin-13 receptor subunit alpha-1; IL-13 receptor subunit
Alternative Names	alpha-1; IL-13R subunit alpha-1; IL-13R-alpha-1; IL-13RA1; Cancer/testis antigen 19; CT19; CD antigen CD213a1
Gene ID	3597.0
SwissProt ID	P78552
Immunogen	The antiserum was produced against synthesized peptide derived from human IL-13R/CD213 alpha1. AA range:371-420

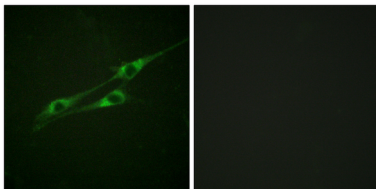
Background

The protein encoded by this gene is a subunit of the interleukin 13 receptor. This subunit forms a receptor complex with IL4 receptor alpha, a subunit shared by IL13 and IL4 receptors. This subunit serves as a primary IL13-binding subunit of the IL13 receptor, and may also be a component of IL4 receptors. This protein has been shown to bind tyrosine kinase TYK2, and thus may mediate the signaling processes that lead to the activation of JAK1, STAT3 and STAT6 induced by IL13 and IL4. [provided by RefSeq, Jul 2008],domain:The box 1 motif is required for JAK interaction and/or activation.,domain:The WSXWS motif appears to be necessary for proper protein folding and thereby efficient intracellular transport and cell-surface receptor binding.,function:Binds IL13 with a low affinity. Together with IL4R-alpha can form a functional receptor for IL13. Also serves as an alternate accessory protein to the common cytokine receptor gamma chain for IL4 signaling, but cannot replace the function of gamma C in allowing enhanced IL2 binding activity.,similarity:Belongs to the type I cytokine receptor family. Type 5 subfamily.,subunit:Interleukin 13 receptor is a complex of IL4R, IL13RA1, and possibly other components. Interacts with TRAF3IP1.,tissue specificity:Ubiquitous. Highest levels in heart, liver, skeletal muscle and ovary; lowest levels in brain, lung and kidney. Also found in B-cells, T-cells and endothelial cells.,

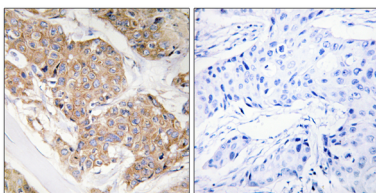
Research Area

Cytokine-cytokine receptor interaction;Jak_STAT;

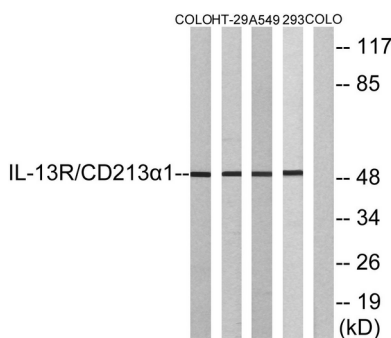
Image Data



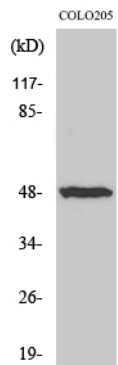
Immunofluorescence analysis of NIH/3T3 cells, using IL-13R/CD213 alpha1 Antibody. The picture on the right is blocked with the synthesized peptide.



Immunohistochemistry analysis of paraffin-embedded human breast carcinoma tissue, using IL-13R/CD213 alpha1 Antibody. The picture on the right is blocked with the synthesized peptide.



Western blot analysis of lysates from COLO, HT-29, A549, and 293 cells, using IL-13R/CD213 alpha1 Antibody. The lane on the right is blocked with the synthesized peptide.



Western Blot analysis of various cells using IL-13R α 1 Polyclonal Antibody diluted at 1: 1000