

Product Name: IL-11R α Rabbit Polyclonal Antibody**Catalog #: APRab12489**

For research use only.

Summary

Description	Rabbit polyclonal Antibody
Host	Rabbit
Application	WB,ELISA
Reactivity	Human,Rat,Mouse
Conjugation	Unconjugated
Modification	Unmodified
Isotype	IgG
Clonality	Polyclonal
Form	Liquid
Concentration	1mg/ml
Storage	Aliquot and store at -20°C (valid for 12 months). Avoid freeze/thaw cycles.
Shipping	Ice bags
Buffer	Liquid in PBS containing 50% glycerol, 0.5% protective protein and 0.02% New type preservative N.
Purification	Affinity purification

Application

Dilution Ratio	WB 1:500-1:2000,ELISA 1:10000-1:20000
Molecular Weight	45kDa

Antigen Information

Gene Name	IL11RA
Alternative Names	IL11RA; Interleukin-11 receptor subunit alpha; IL-11 receptor subunit alpha; IL-11R subunit alpha; IL-11R-alpha; IL-11RA
Gene ID	3590.0
SwissProt ID	Q14626
Immunogen	Synthesized peptide derived from IL-11R α . at AA range: 300-380

Background

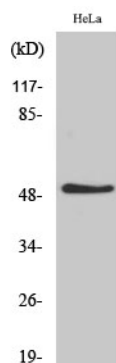
Interleukin 11 is a stromal cell-derived cytokine that belongs to a family of pleiotropic and redundant cytokines that use the

gp130 transducing subunit in their high affinity receptors. This gene encodes the IL-11 receptor, which is a member of the hematopoietic cytokine receptor family. This particular receptor is very similar to ciliary neurotrophic factor, since both contain an extracellular region with a 2-domain structure composed of an immunoglobulin-like domain and a cytokine receptor-like domain. Multiple alternatively spliced transcript variants have been found for this gene. [provided by RefSeq, Jun 2012],disease:Increased levels of IL11R are found in prostate carcinoma.,function:Receptor for interleukin-11. The receptor systems for IL6, LIF, OSM, CNTF, IL11 and CT1 can utilize IL6ST for initiating signal transmission. The IL11/IL11RA/IL6ST complex may be involved in the control of proliferation and/or differentiation of skeletogenic progenitor or other mesenchymal cells.,similarity:Belongs to the type I cytokine receptor family. Type 3 subfamily.,similarity:Contains 1 Ig-like C2-type (immunoglobulin-like) domain.,similarity:Contains 2 fibronectin type-III domains.,subunit:On ligand binding, forms a multimer complex with IL6ST/gp130.,tissue specificity:Expressed in a number of cell lines, including the myelogenous leukemia cell line K562, the megakaryocytic leukemia cell line Mo7E, the erythroleukemia cell line TF1, and the osteosarcoma cell lines, MG-63 and Saos-2. Also expressed in normal and malignant prostate epithelial cell lines.,

Research Area

Cytokine-cytokine receptor interaction;Jak_STAT;Hematopoietic cell lineage;

Image Data



Western Blot analysis of various cells using IL-11Rα Polyclonal Antibody