

Product Name: IL-11 Rabbit Polyclonal Antibody**Catalog #: APRab12487**

For research use only.

Summary

Description	Rabbit polyclonal Antibody
Host	Rabbit
Application	IHC, ICC/IF, ELISA
Reactivity	Human, Mouse, Rat
Conjugation	Unconjugated
Modification	Unmodified
Isotype	IgG
Clonality	Polyclonal
Form	Liquid
Concentration	1mg/ml
Storage	Aliquot and store at -20°C (valid for 12 months). Avoid freeze/thaw cycles.
Shipping	Ice bags
Buffer	Liquid in PBS containing 50% glycerol, 0.5% protective protein and 0.02% New type preservative N.
Purification	Affinity purification

Application

Dilution Ratio IHC 1:100-1:300, ICC/IF 1:50-1:200, ELISA 1:5000-1:10000

Molecular Weight

Antigen Information

Gene Name	IL11
Alternative Names	IL11; Interleukin-11; IL-11; Adipogenesis inhibitory factor; AGIF; Oprelvekin
Gene ID	3589.0
SwissProt ID	P20809
Immunogen	The antiserum was produced against synthesized peptide derived from human IL-11. AA range:27-76

Background

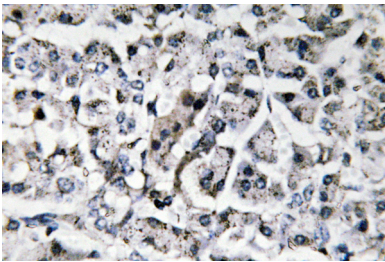
The protein encoded by this gene is a member of the gp130 family of cytokines. These cytokines drive the assembly of

multisubunit receptor complexes, all of which contain at least one molecule of the transmembrane signaling receptor IL6ST (gp130). This cytokine is shown to stimulate the T-cell-dependent development of immunoglobulin-producing B cells. It is also found to support the proliferation of hematopoietic stem cells and megakaryocyte progenitor cells. Alternatively spliced transcript variants encoding distinct isoforms have been found for this gene. [provided by RefSeq, Jun 2012],function:Directly stimulates the proliferation of hematopoietic stem cells and megakaryocyte progenitor cells and induces megakaryocyte maturation resulting in increased platelet production.,online information:Clinical information on Neumega,online information:Interleukin-11 entry,pharmaceutical:Available under the name Neumega (Wyeth). Used for the prevention of severe thrombocytopenia and the reduction of the need for platelet transfusion following myelosuppressive chemotherapy.,similarity:Belongs to the IL-6 superfamily.,

Research Area

Cytokine-cytokine receptor interaction;Jak_STAT;Hematopoietic cell lineage;

Image Data



Immunohistochemistry analysis of IL-11 antibody in paraffin-embedded human pancreas tissue.