

Product Name: IKKy Rabbit Polyclonal Antibody**Catalog #: APRab12479**

For research use only.

Summary

Description	Rabbit polyclonal Antibody
Host	Rabbit
Application	WB,IHC,ICC/IF,ELISA
Reactivity	Human,Rat,Mouse
Conjugation	Unconjugated
Modification	Unmodified
Isotype	IgG
Clonality	Polyclonal
Form	Liquid
Concentration	1mg/ml
Storage	Aliquot and store at -20°C (valid for 12 months). Avoid freeze/thaw cycles.
Shipping	Ice bags
Buffer	Liquid in PBS containing 50% glycerol, 0.5% protective protein and 0.02% New type preservative N.
Purification	Affinity purification

Application

Dilution Ratio	WB 1:500-1:2000,IHC 1:100-1:300,ICC/IF 1:200-1:1000,ELISA 1:10000-1:20000
Molecular Weight	43kDa

Antigen Information

Gene Name	IKBKG IKBKG; FIP3; NEMO; NF-kappa-B essential modulator; NEMO; FIP-3; Ikb kinase-associated
Alternative Names	protein 1; IKKAP1; Inhibitor of nuclear factor kappa-B kinase subunit gamma; I-kappa-B kinase subunit gamma; IKK-gamma; IKKG; Ikb kinase subunit gamma; NF
Gene ID	8517.0
SwissProt ID	Q9Y6K9
Immunogen	The antiserum was produced against synthesized peptide derived from human IKK-gamma. AA range:51-100

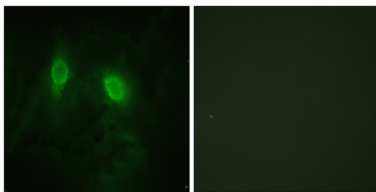
Background

This gene encodes the regulatory subunit of the inhibitor of kappaB kinase (IKK) complex, which activates NF-kappaB resulting in activation of genes involved in inflammation, immunity, cell survival, and other pathways. Mutations in this gene result in incontinentia pigmenti, hypohidrotic ectodermal dysplasia, and several other types of immunodeficiencies. A pseudogene highly similar to this locus is located in an adjacent region of the X chromosome. [provided by RefSeq, Mar 2016],

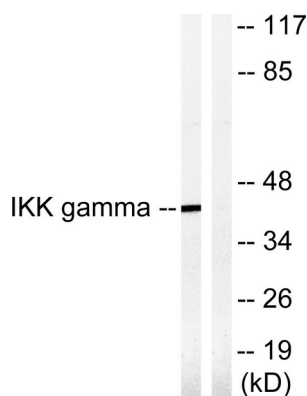
Research Area

MAPK_ERK_Growth;MAPK_G_Protein;Chemokine;Apoptosis_Inhibition;Apoptosis_Mitochondrial;Apoptosis_Overview;Toll_Like ;NOD-like receptor;RIG-I-like receptor;Cytosolic DNA-sensing pathway;T_Cell_Receptor;B_Cell_Antigen;Adipocytokine;Epithelial cell signaling in Helicobacter pylori infection;Pathways in cancer;Pancreatic cancer;Prostate cancer;Chronic myeloid leukemia;Acute myeloid leukemia;Small cell lung cancer;Primary immunodeficiency;

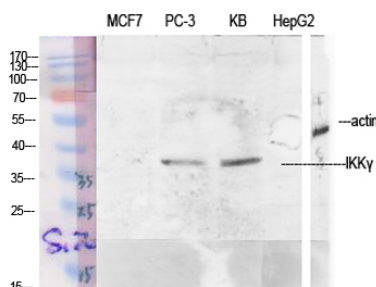
Image Data



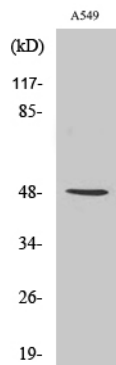
Immunofluorescence analysis of HeLa cells, using IKK-gamma Antibody. The picture on the right is blocked with the synthesized peptide.



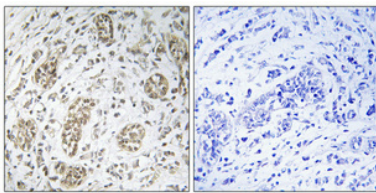
Western blot analysis of lysates from HepG2 cells, treated with Anisomycin 0.5uM 5h, using IKK-gamma Antibody. The lane on the right is blocked with the synthesized peptide.



Western Blot analysis of various cells using IKK γ Polyclonal Antibody diluted at 1 : 1000



Western Blot analysis of RAW264.7 cells using IKKy Polyclonal Antibody diluted at 1 : 1000



Immunohistochemical analysis of paraffin-embedded Human breast cancer. Antibody was diluted at 1:100 (4°, overnight). High-pressure and temperature Tris-EDTA, pH 8.0 was used for antigen retrieval. Negative control (right) obtained from antibody was pre-absorbed by immunogen peptide.