

---

**Product Name: IK1 Rabbit Polyclonal Antibody****Catalog #: APRab12461**

For research use only.

**Summary**

<b>Description</b>	Rabbit polyclonal Antibody
<b>Host</b>	Rabbit
<b>Application</b>	WB,ELISA
<b>Reactivity</b>	Human,Mouse,Rat
<b>Conjugation</b>	Unconjugated
<b>Modification</b>	Unmodified
<b>Isotype</b>	IgG
<b>Clonality</b>	Polyclonal
<b>Form</b>	Liquid
<b>Concentration</b>	1mg/ml
<b>Storage</b>	Aliquot and store at -20°C (valid for 12 months). Avoid freeze/thaw cycles.
<b>Shipping</b>	Ice bags
<b>Buffer</b>	Liquid in PBS containing 50% glycerol, 0.5% protective protein and 0.02% New type preservative N.
<b>Purification</b>	Affinity purification

**Application**

<b>Dilution Ratio</b>	WB 1:500-1:2000,ELISA 1:10000-1:20000
<b>Molecular Weight</b>	48kDa

**Antigen Information**

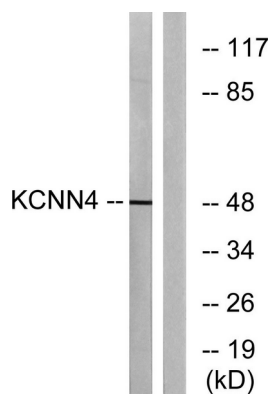
<b>Gene Name</b>	KCNN4
<b>Alternative Names</b>	KCNN4; IK1; IKCA1; KCA4; SK4; Intermediate conductance calcium-activated potassium channel protein 4; SK4; SKCa 4; SKCa4; IKCa1; IK1; KCa3.1; KCa4; Putative Gardos channel
<b>Gene ID</b>	3783.0
<b>SwissProt ID</b>	O15554
<b>Immunogen</b>	The antiserum was produced against synthesized peptide derived from human KCNN4. AA range:331-380

**Background**

potassium calcium-activated channel subfamily N member 4(KCNN4) Homo sapiens The protein encoded by this gene is part of a potentially heterotetrameric voltage-independent potassium channel that is activated by intracellular calcium. Activation is followed by membrane hyperpolarization, which promotes calcium influx. The encoded protein may be part of the predominant calcium-activated potassium channel in T-lymphocytes. This gene is similar to other KCNN family potassium channel genes, but it differs enough to possibly be considered as part of a new subfamily. [provided by RefSeq, Jul 2008],function:Forms a voltage-independent potassium channel that is activated by intracellular calcium. Activation is followed by membrane hyperpolarization which promotes calcium influx. The channel is blocked by clotrimazole and charybdotoxin but is insensitive to apamin.,induction:Up-regulated by phorbol myristate acetate (PMA) and phytohemagglutinin (PHA) in T-cells.,similarity:Belongs to the potassium channel KCNN family.,subunit:Heterotetramer of potassium channel proteins (Probable). Interacts with MTMR6.,tissue specificity:Widely expressed in non-excitabile tissues.,

## Research Area

### Image Data



Western blot analysis of lysates from HepG2 cells, using KCNN4 Antibody. The lane on the right is blocked with the synthesized peptide.