
Product Name: IK Rabbit Polyclonal Antibody**Catalog #: APRab12460**

For research use only.

Summary

Description	Rabbit polyclonal Antibody
Host	Rabbit
Application	WB,IHC,ICC/IF,ELISA
Reactivity	Human,Mouse,Rat
Conjugation	Unconjugated
Modification	Unmodified
Isotype	IgG
Clonality	Polyclonal
Form	Liquid
Concentration	1mg/ml
Storage	Aliquot and store at -20°C (valid for 12 months). Avoid freeze/thaw cycles.
Shipping	Ice bags
Buffer	Liquid in PBS containing 50% glycerol, 0.5% protective protein and 0.02% New type preservative N.
Purification	Affinity purification

Application

Dilution Ratio	WB 1:500-1:2000,IHC 1:100-1:300,ICC/IF 1:50-1:200,ELISA 1:10000-1:20000
Molecular Weight	66kDa

Antigen Information

Gene Name	IK
Alternative Names	IK; RED; RER; Protein Red; Cytokine IK; IK factor; Protein RER
Gene ID	3550.0
SwissProt ID	Q13123
Immunogen	The antiserum was produced against synthesized peptide derived from human RED. AA range:508-557

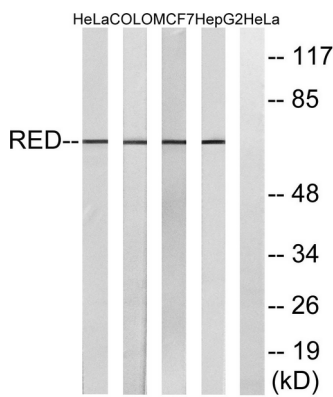
Background

The protein encoded by this gene was identified by its RED repeat, a stretch of repeated arginine, glutamic acid and aspartic

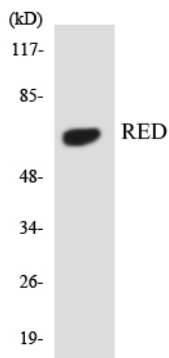
acid residues. The protein localizes to discrete dots within the nucleus, excluding the nucleolus. Its function is unknown. This gene maps to chromosome 5; however, a pseudogene may exist on chromosome 2. [provided by RefSeq, Jul 2008],caution:Was originally (PubMed:7970704) thought to be the IK factor, a cytokine involved in the negative regulatory pathway of constitutive MHC class II antigens expression.,developmental stage:Expressed at similar levels in fetal and adult tissues.,function:Not known. May bind to chromatin.,PTM:Phosphorylated upon DNA damage, probably by ATM or ATR.,similarity:Belongs to the RED family.,tissue specificity:Ubiquitous.,

Research Area

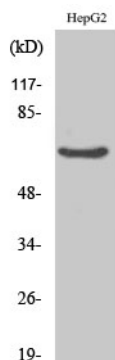
Image Data



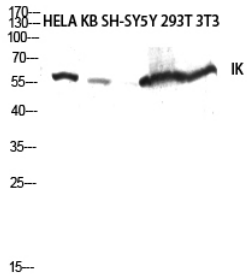
Western blot analysis of lysates from HepG2, MCF-7, COLO, and HeLa cells, using RED Antibody. The lane on the right is blocked with the synthesized peptide.



Western blot analysis of the lysates from 293 cells using RED antibody.



Western Blot analysis of various cells using IK Polyclonal Antibody diluted at 1 : 2000.



Western blot analysis of HELA KB SH-SY5Y 293T 3T3 lysis using IK antibody.
Antibody was diluted at 1:2000.