

Product Name: IGSF4B Rabbit Polyclonal Antibody**Catalog #: AP Rab12454**

For research use only.

Summary

| | |
|----------------------|---------------------------------------------------------------------------------------------------|
| Description | Rabbit polyclonal Antibody |
| Host | Rabbit |
| Application | WB,IHC,ICC/IF,ELISA |
| Reactivity | Human,Mouse,Rat |
| Conjugation | Unconjugated |
| Modification | Unmodified |
| Isotype | IgG |
| Clonality | Polyclonal |
| Form | Liquid |
| Concentration | 1mg/ml |
| Storage | Aliquot and store at -20°C (valid for 12 months). Avoid freeze/thaw cycles. |
| Shipping | Ice bags |
| Buffer | Liquid in PBS containing 50% glycerol, 0.5% protective protein and 0.02% New type preservative N. |
| Purification | Affinity purification |

Application

| | |
|-------------------------|--------------------------------------------------------------------------|
| Dilution Ratio | WB 1:500-1:2000,IHC 1:100-1:300,ICC/IF 1:200-1:1000,ELISA 1:5000-1:10000 |
| Molecular Weight | 43kDa |

Antigen Information

| | |
|--------------------------|--------------------------------------------------------------------------------------------------------------------------------------------------------------------------------------------------------------------------------------------------|
| Gene Name | CADM3 |
| Alternative Names | CADM3; IGSF4B; NECL1; SYNCAM3; TSLL1; Cell adhesion molecule 3; Brain immunoglobulin receptor; Immunoglobulin superfamily member 4B; IgSF4B; Nectin-like protein 1; NECL-1; Synaptic cell adhesion molecule 3; SynCAM3; TSLC1-like protein 1; TS |
| Gene ID | 57863.0 |
| SwissProt ID | Q8N126 |
| Immunogen | The antiserum was produced against synthesized peptide derived from human CADM3. AA range:141-190 |

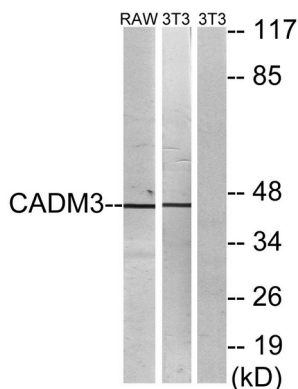
Background

cell adhesion molecule 3(CADM3) Homo sapiens IGSF4B is a brain-specific protein related to the calcium-independent cell-cell adhesion molecules known as nectins (see PVRL3; MIM 607147) (Kakunaga et al., 2005 [PubMed 15741237]).[supplied by OMIM, Mar 2008],domain:The cytoplasmic region mediates interaction with EPB41L1, DLG3, MPP6 and CASK.,function:Involved in the cell-cell adhesion. Has both calcium-independent homophilic cell-cell adhesion activity and calcium-independent heterophilic cell-cell adhesion activity with IGSF4, PVRL1 and PVRL3. Interaction with EPB41L1 may regulate structure or function of cell-cell junctions.,induction:Markedly in glioma cell lines and prostate cancer cell lines.,similarity:Belongs to the nectin family.,similarity:Contains 1 Ig-like V-type (immunoglobulin-like) domain.,similarity:Contains 2 Ig-like C2-type (immunoglobulin-like) domains.,subcellular location:Localized at the cell-cell attached sites of the plasma membrane.,subunit:Homodimer. Can form trans-heterodimers with PVRL3/nectin-3. Interacts with EPB41L1, DLG3, MPP6 and CASK.,tissue specificity:Isoform 1 is expressed mainly in adult and fetal brain. Isoform 2 is highly expressed in adult brain and weakly expressed in placenta. In brain, Isoform 2 is highly expressed in cerebellum.,

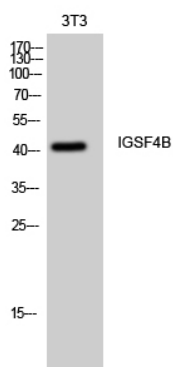
Research Area

Cell adhesion molecules (CAMs);

Image Data



Western blot analysis of lysates from NIH/3T3 and RAW264.7 cells, using CADM3 Antibody. The lane on the right is blocked with the synthesized peptide.



Western Blot analysis of 3T3 cells using IGSF4B Polyclonal Antibody