
Product Name: IGFBP7 Rabbit Polyclonal Antibody**Catalog #: APRab12433**

For research use only.

Summary

Description	Rabbit polyclonal Antibody
Host	Rabbit
Application	IHC,ICC/IF,ELISA
Reactivity	Human,Mouse,Rat
Conjugation	Unconjugated
Modification	Unmodified
Isotype	IgG
Clonality	Polyclonal
Form	Liquid
Concentration	1mg/ml
Storage	Aliquot and store at -20°C (valid for 12 months). Avoid freeze/thaw cycles.
Shipping	Ice bags
Buffer	Liquid in PBS containing 50% glycerol, 0.5% protective protein and 0.02% New type preservative N.
Purification	Affinity purification

Application

Dilution Ratio IHC 1:100-1:300,ICC/IF 1:50-1:200,ELISA 1:20000-1:40000

Molecular Weight

Antigen Information

Gene Name	IGFBP7 IGFBP7; MAC25; PSF; Insulin-like growth factor-binding protein 7; IBP-7; IGF-binding protein
Alternative Names	7; IGFBP-7; IGFBP-rP1; MAC25 protein; PGI2-stimulating factor; Prostacyclin-stimulating factor; Tumor-derived adhesion factor; TAF
Gene ID	3490.0
SwissProt ID	Q16270
Immunogen	The antiserum was produced against synthesized peptide derived from human IBP7. AA range:191-240

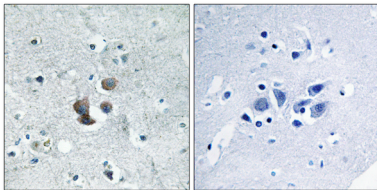
Background

This gene encodes a member of the insulin-like growth factor (IGF)-binding protein (IGFBP) family. IGFBPs bind IGFs with high affinity, and regulate IGF availability in body fluids and tissues and modulate IGF binding to its receptors. This protein binds IGF-I and IGF-II with relatively low affinity, and belongs to a subfamily of low-affinity IGFBPs. It also stimulates prostacyclin production and cell adhesion. Alternatively spliced transcript variants encoding different isoforms have been described for this gene, and one variant has been associated with retinal arterial macroaneurysm (PMID:21835307). [provided by RefSeq, Dec 2011],function: Binds IGF-I and IGF-II with a relatively low affinity. Stimulates prostacyclin (PGI₂) production. Stimulates cell adhesion.,PTM: N-glycosylated.,similarity: Contains 1 Ig-like C2-type (immunoglobulin-like) domain.,similarity: Contains 1 IGFBP N-terminal domain.,similarity: Contains 1 Kazal-like domain.,subunit: May interact with VPS24/CHMP3; the relevance of such interaction however remains unclear.,

Research Area

Signal Transduction

Image Data



Immunohistochemistry analysis of paraffin-embedded human brain tissue, using IBP7 Antibody. The picture on the right is blocked with the synthesized peptide.