

---

**Product Name: IgA Rabbit Polyclonal Antibody****Catalog #: APRab12418**

For research use only.

**Summary**

<b>Description</b>	Rabbit polyclonal Antibody
<b>Host</b>	Rabbit
<b>Application</b>	WB,IHC,ICC/IF,ELISA
<b>Reactivity</b>	Human
<b>Conjugation</b>	Unconjugated
<b>Modification</b>	Unmodified
<b>Isotype</b>	IgG
<b>Clonality</b>	Polyclonal
<b>Form</b>	Liquid
<b>Concentration</b>	1mg/ml
<b>Storage</b>	Aliquot and store at -20°C (valid for 12 months). Avoid freeze/thaw cycles.
<b>Shipping</b>	Ice bags
<b>Buffer</b>	Liquid in PBS containing 50% glycerol, 0.5% protective protein and 0.02% New type preservative N.
<b>Purification</b>	Affinity purification

**Application**

<b>Dilution Ratio</b>	WB 1:500-1:2000,IHC 1:100-1:300,ICC/IF 1:50-1:200,ELISA 1:20000-1:40000
<b>Molecular Weight</b>	38kDa

**Antigen Information**

<b>Gene Name</b>	IGHA1/IGHA2
<b>Alternative Names</b>	IGHA1; Ig alpha-1 chain C region; IGH A2; Ig alpha-2 chain C region
<b>Gene ID</b>	3493/3494
<b>SwissProt ID</b>	P01876/P01877
<b>Immunogen</b>	The antiserum was produced against synthesized peptide derived from human IgA. AA range:227-276

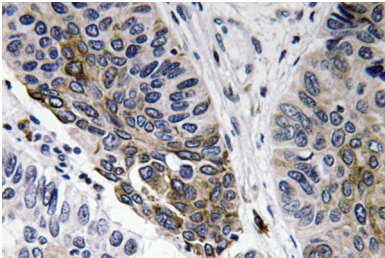
**Background**

disease:A chromosomal aberration involving IGH A1 is found in multiple myeloma (MM) cell lines. Translocation t(1;14)

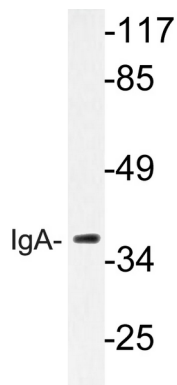
(q21;q32) that forms a FCRL4-IGHA1 fusion protein.,function:Ig alpha is the major immunoglobulin class in body secretions. It may serve both to defend against local infection and to prevent access of foreign antigens to the general immunologic system.,PTM:3-Hydroxykynurenine, an oxidized tryptophan metabolite that is common in biological fluids, reacts with alpha-1-microglobulin to form heterogeneous polycyclic chromophores including hydroxanthommatin. The chromophore reacts with accessible cysteines forming non-reducible thioether cross-links with Ig alpha-1 chain C region Cys-352.,similarity:Contains 3 Ig-like (immunoglobulin-like) domains.,subunit:Monomeric or polymeric.,disease:A chromosomal aberration involving IGHA1 is found in multiple myeloma (MM) cell lines. Translocation t(1;14)(q21;q32) that forms a FCRL4-IGHA1 fusion protein.,function:Ig alpha is the major immunoglobulin class in body secretions. It may serve both to defend against local infection and to prevent access of foreign antigens to the general immunologic system.,PTM:3-Hydroxykynurenine, an oxidized tryptophan metabolite that is common in biological fluids, reacts with alpha-1-microglobulin to form heterogeneous polycyclic chromophores including hydroxanthommatin. The chromophore reacts with accessible cysteines forming non-reducible thioether cross-links with Ig alpha-1 chain C region Cys-352.,similarity:Contains 3 Ig-like (immunoglobulin-like) domains.,subunit:Monomeric or polymeric.,

## Research Area

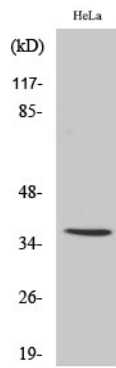
## Image Data



Immunohistochemistry analysis of IgA antibody in paraffin-embedded human lung carcinoma tissue.



Western blot analysis of lysate from HeLa cells, using IgA antibody.



Western Blot analysis of various cells using IgA Polyclonal Antibody