

**Product Name: IFRD2 Rabbit Polyclonal Antibody****Catalog #: APRab12408**

For research use only.

**Summary**

<b>Description</b>	Rabbit polyclonal Antibody
<b>Host</b>	Rabbit
<b>Application</b>	WB,ELISA
<b>Reactivity</b>	Human,Rat,Mouse
<b>Conjugation</b>	Unconjugated
<b>Modification</b>	Unmodified
<b>Isotype</b>	IgG
<b>Clonality</b>	Polyclonal
<b>Form</b>	Liquid
<b>Concentration</b>	1mg/ml
<b>Storage</b>	Aliquot and store at -20°C (valid for 12 months). Avoid freeze/thaw cycles.
<b>Shipping</b>	Ice bags
<b>Buffer</b>	Liquid in PBS containing 50% glycerol, and 0.02% New type preservative N.
<b>Purification</b>	Affinity purification

**Application**

<b>Dilution Ratio</b>	WB 1:500-1:2000,ELISA 1:5000-1:20000
<b>Molecular Weight</b>	55kDa

**Antigen Information**

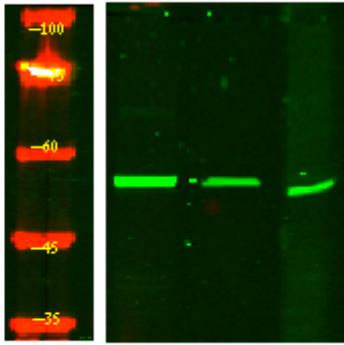
<b>Gene Name</b>	IFRD2
<b>Alternative Names</b>	
<b>Gene ID</b>	7866.0
<b>SwissProt ID</b>	Q12894
<b>Immunogen</b>	Synthesized peptide derived from human protein . at AA range: 260-340

**Background**

similarity:Belongs to the IFRD family.,tissue specificity:Expressed in a variety of tissues.,similarity:Belongs to the IFRD family.,tissue specificity:Expressed in a variety of tissues.,

## Research Area

## Image Data



Western Blot analysis of HEK293 lysis, using primary antibody at 1:1000 dilution. Secondary antibody was diluted at 1:10000