
Product Name: IFN- ω Rabbit Polyclonal Antibody**Catalog #: APRab12406**

For research use only.

Summary

Description	Rabbit polyclonal Antibody
Host	Rabbit
Application	WB,IHC,ICC/IF,ELISA
Reactivity	Human,Rat,Mouse
Conjugation	Unconjugated
Modification	Unmodified
Isotype	IgG
Clonality	Polyclonal
Form	Liquid
Concentration	1mg/ml
Storage	Aliquot and store at -20°C (valid for 12 months). Avoid freeze/thaw cycles.
Shipping	Ice bags
Buffer	Liquid in PBS containing 50% glycerol, 0.5% protective protein and 0.02% New type preservative N.
Purification	Affinity purification

Application

Dilution Ratio	WB 1:500-1:2000,IHC 1:100-1:300,ICC/IF 1:50-1:200,ELISA 1:10000-1:20000
Molecular Weight	22kDa

Antigen Information

Gene Name	IFNW1
Alternative Names	IFNW1; Interferon omega-1; Interferon alpha-II-1
Gene ID	3467.0
SwissProt ID	P05000
Immunogen	The antiserum was produced against synthesized peptide derived from the C-terminal region of human IFNW1. AA range:146-195

Background

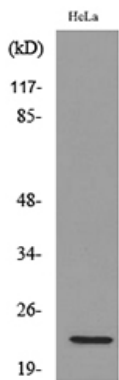
The protein encoded by this gene is an interferon and possesses antiviral activity. The encoded protein binds to the interferon

alpha/beta receptor but not to the interferon gamma receptor. This intronless gene has several pseudogenes spread throughout the genome. [provided by RefSeq, Nov 2015],similarity:Belongs to the alpha/beta interferon family.,

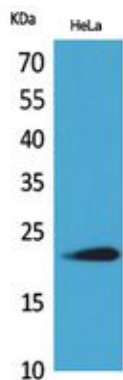
Research Area

Cytokine-cytokine receptor interaction;RIG-I-like receptor;Jak_STAT;

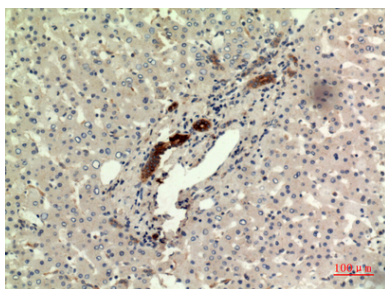
Image Data



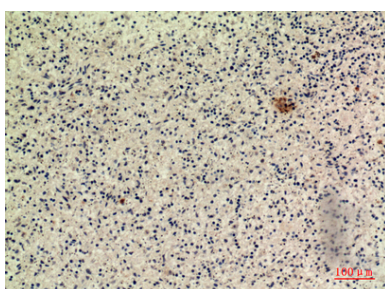
Western blot analysis of lysate from HeLa cells, using IFNW1 Antibody.



Western Blot analysis of HeLa cells using IFN- ω Polyclonal Antibody.. Secondary antibody was diluted at 1:20000



Immunohistochemical analysis of paraffin-embedded human-liver, antibody was diluted at 1:100



Immunohistochemical analysis of paraffin-embedded human-spleen, antibody was diluted at 1:100

