

---

**Product Name: IFN21 Rabbit Polyclonal Antibody****Catalog #: APRab12389**

For research use only.

**Summary**

<b>Description</b>	Rabbit polyclonal Antibody
<b>Host</b>	Rabbit
<b>Application</b>	WB,ELISA
<b>Reactivity</b>	Human,Rat,Mouse
<b>Conjugation</b>	Unconjugated
<b>Modification</b>	Unmodified
<b>Isotype</b>	IgG
<b>Clonality</b>	Polyclonal
<b>Form</b>	Liquid
<b>Concentration</b>	1mg/ml
<b>Storage</b>	Aliquot and store at -20°C (valid for 12 months). Avoid freeze/thaw cycles.
<b>Shipping</b>	Ice bags
<b>Buffer</b>	Liquid in PBS containing 50% glycerol, and 0.02% New type preservative N.
<b>Purification</b>	Affinity purification

**Application**

<b>Dilution Ratio</b>	WB 1:500-1:2000,ELISA 1:5000-1:20000
<b>Molecular Weight</b>	20kDa

**Antigen Information**

<b>Gene Name</b>	IFNA21
<b>Alternative Names</b>	
<b>Gene ID</b>	3452.0
<b>SwissProt ID</b>	P01568
<b>Immunogen</b>	Synthesized peptide derived from human protein . at AA range: 1-80

**Background**

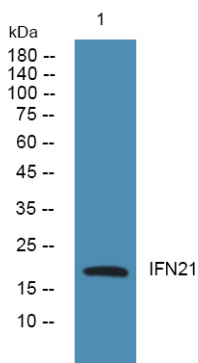
This gene is a member of the alpha interferon gene cluster on the short arm of chromosome 9. Interferons are cytokines produced in response to viral infection that mediate the immune response and interfere with viral replication. The encoded protein is a type I interferon and may play a specific role in the antiviral response to rubella virus. [provided by RefSeq, Sep

2011],function:Produced by macrophages, IFN-alpha have antiviral activities. Interferon stimulates the production of two enzymes: a protein kinase and an oligoadenylate synthetase.,similarity:Belongs to the alpha/beta interferon family.,

## Research Area

Cytokine-cytokine receptor interaction;Regulation of autophagy;Antigen processing and presentation;Toll\_Like;RIG-I-like receptor;Cytosolic DNA-sensing pathway;Jak\_STAT;Natural killer cell mediated cytotoxicity;Autoimmune thyroid disease;

## Image Data



Western blot analysis of lysates from SW480 cells, IFN21 Rabbit Polyclonal Antibody was diluted at 1:1000, 4°over night