

Product Name: ICAM-2 Rabbit Polyclonal Antibody**Catalog #: APRab12338**

For research use only.

Summary

Description	Rabbit polyclonal Antibody
Host	Rabbit
Application	WB,ELISA
Reactivity	Human,Rat,Mouse
Conjugation	Unconjugated
Modification	Unmodified
Isotype	IgG
Clonality	Polyclonal
Form	Liquid
Concentration	1mg/ml
Storage	Aliquot and store at -20°C (valid for 12 months). Avoid freeze/thaw cycles.
Shipping	Ice bags
Buffer	Liquid in PBS containing 50% glycerol, 0.5% protective protein and 0.02% New type preservative N.
Purification	Affinity purification

Application

Dilution Ratio	WB 1:500-1:2000,ELISA 1:5000-1:20000
Molecular Weight	30kDa

Antigen Information

Gene Name	ICAM2
Alternative Names	ICAM2; Intercellular adhesion molecule 2; ICAM-2; CD antigen CD102
Gene ID	3384.0
SwissProt ID	P13598
Immunogen	The antiserum was produced against synthesized peptide derived from human ICAM2. AA range:151-200

Background

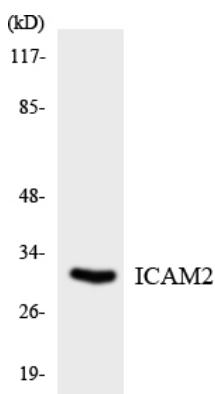
The protein encoded by this gene is a member of the intercellular adhesion molecule (ICAM) family. All ICAM proteins are type I

transmembrane glycoproteins, contain 2-9 immunoglobulin-like C2-type domains, and bind to the leukocyte adhesion LFA-1 protein. This protein may play a role in lymphocyte recirculation by blocking LFA-1-dependent cell adhesion. It mediates adhesive interactions important for antigen-specific immune response, NK-cell mediated clearance, lymphocyte recirculation, and other cellular interactions important for immune response and surveillance. Several transcript variants encoding the same protein have been found for this gene. [provided by RefSeq, Jul 2008],function:ICAM proteins are ligands for the leukocyte adhesion protein LFA-1 (integrin alpha-L/beta-2). ICAM2 may play a role in lymphocyte recirculation by blocking LFA-1-dependent cell adhesion. It mediates adhesive interactions important for antigen-specific immune response, NK-cell mediated clearance, lymphocyte recirculation, and other cellular interactions important for immune response and surveillance.,online information:ICAM-2,similarity:Belongs to the immunoglobulin superfamily. ICAM family.,similarity:Contains 2 Ig-like C2-type (immunoglobulin-like) domains.,

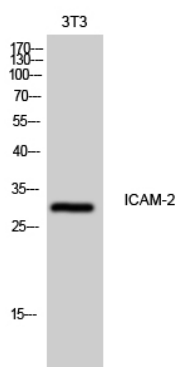
Research Area

Cell adhesion molecules (CAMs);Natural killer cell mediated cytotoxicity;

Image Data



Western blot analysis of the lysates from HT-29 cells using ICAM2 antibody.



Western Blot analysis of 3T3 cells using ICAM-2 Polyclonal Antibody