
Product Name: I20L2 Rabbit Polyclonal Antibody**Catalog #: APRab12317**

For research use only.

Summary

Description	Rabbit polyclonal Antibody
Host	Rabbit
Application	WB,ELISA
Reactivity	Human,Rat,Mouse
Conjugation	Unconjugated
Modification	Unmodified
Isotype	IgG
Clonality	Polyclonal
Form	Liquid
Concentration	1mg/ml
Storage	Aliquot and store at -20°C (valid for 12 months). Avoid freeze/thaw cycles.
Shipping	Ice bags
Buffer	Liquid in PBS containing 50% glycerol, and 0.02% New type preservative N.
Purification	Affinity purification

Application

Dilution Ratio	WB 1:500-1:2000,ELISA 1:5000-1:20000
Molecular Weight	38kDa

Antigen Information

Gene Name	ISG20L2 HSD-38 HSD38
Alternative Names	
Gene ID	81875.0
SwissProt ID	Q9H9L3
Immunogen	Synthesized peptide derived from part region of human protein

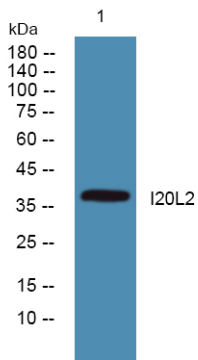
Background

This gene encodes a 3'-5' exoribonuclease that may be involved in the processing of the 12S pre-rRNA. Pseudogenes have been identified on chromosomes 6 and 11. [provided by RefSeq, Dec 2014],function:3'-> 5'-exoribonuclease involved in ribosome biogenesis in the processing of the 12S pre-rRNA. Displays a strong specificity for a 3'-end containing a free hydroxyl

group.,similarity:Contains 1 exonuclease domain.,

Research Area

Image Data



Western blot analysis of lysates from SW480 cells, I20L2 Rabbit Polyclonal Antibody was diluted at 1:1000, 4° over night