
Product Name: HSP70 Rabbit Polyclonal Antibody**Catalog #: APRab12252**

For research use only.

Summary

Description	Rabbit polyclonal Antibody
Host	Rabbit
Application	WB,IHC,ICC/IF,ELISA
Reactivity	Human,Mouse,Rat
Conjugation	Unconjugated
Modification	Unmodified
Isotype	IgG
Clonality	Polyclonal
Form	Liquid
Concentration	1mg/ml
Storage	Aliquot and store at -20°C (valid for 12 months). Avoid freeze/thaw cycles.
Shipping	Ice bags
Buffer	Liquid in PBS containing 50% glycerol, 0.5% protective protein and 0.02% New type preservative N.
Purification	Affinity purification

Application

Dilution Ratio	WB 1:500-1:2000,IHC 1:100-1:300,ICC/IF 1:50-1:200,ELISA 1:20000-1:40000
Molecular Weight	70kDa

Antigen Information

Gene Name	HSPA1L/HSPA1A HSPA1L; Heat shock 70 kDa protein 1-like; Heat shock 70 kDa protein 1L; Heat shock 70 kDa
Alternative Names	protein 1-Hom; HSP70-Hom; HSPA1A; HSPA1; HSPA1B; Heat shock 70 kDa protein 1A/1B; Heat shock 70 kDa protein 1/2; HSP70-1/HSP70-2; HSP70.1/HSP70.2
Gene ID	3305/3303/3304
SwissProt ID	P34931/P08107
Immunogen	The antiserum was produced against synthesized peptide derived from human HSPA1L. AA range:221-270

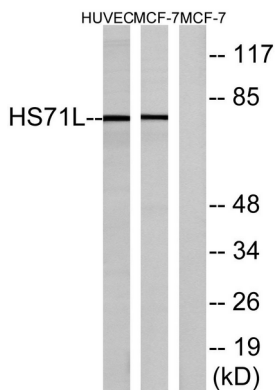
Background

This gene encodes a 70kDa heat shock protein. In conjunction with other heat shock proteins, this protein stabilizes existing proteins against aggregation and mediates the folding of newly translated proteins in the cytosol and in organelles. The gene is located in the major histocompatibility complex class III region, in a cluster with two closely related genes which also encode isoforms of the 70kDa heat shock protein. [provided by RefSeq, Jul 2008],function:In cooperation with other chaperones, Hsp70s stabilize preexistent proteins against aggregation and mediate the folding of newly translated polypeptides in the cytosol as well as within organelles. These chaperones participate in all these processes through their ability to recognize nonnative conformations of other proteins. They bind extended peptide segments with a net hydrophobic character exposed by polypeptides during translation and membrane translocation, or following stress-induced damage.,induction:Not induced by heat shock.,similarity:Belongs to the heat shock protein 70 family.,tissue specificity:Expressed in spermatids,.

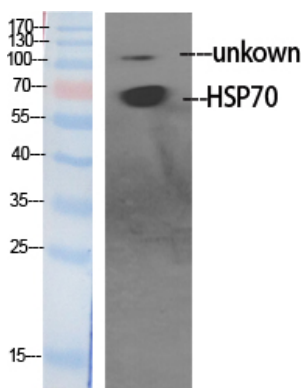
Research Area

Spliceosome;MAPK_ERK_Growth;MAPK_G_Protein;Endocytosis;Antigen processing and presentation;

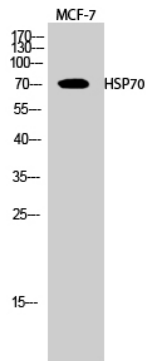
Image Data



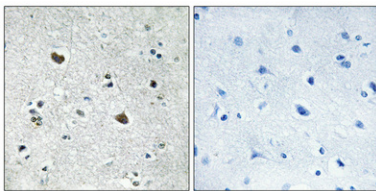
Western blot analysis of lysates from MCF-7 cells and HUVEC cells, using HS71L Antibody. The lane on the right is blocked with the synthesized peptide.



Western Blot analysis of various cells using HSP70 Polyclonal Antibody diluted at 1:1000



Western Blot analysis of MCF-7 cells using HSP70 Polyclonal Antibody diluted at 1:1000



Immunohistochemical analysis of paraffin-embedded Human brain. Antibody was diluted at 1:100 (4°, overnight) . High-pressure and temperature Tris-EDTA, pH8.0 was used for antigen retrieval. Negative control (right) obtained from antibody was pre-absorbed by immunogen peptide.