
Product Name: HSP β 2 Rabbit Polyclonal Antibody**Catalog #: APRab12235**

For research use only.

Summary

Description	Rabbit polyclonal Antibody
Host	Rabbit
Application	WB,IHC,ICC/IF,ELISA
Reactivity	Human,Mouse,Rat
Conjugation	Unconjugated
Modification	Unmodified
Isotype	IgG
Clonality	Polyclonal
Form	Liquid
Concentration	1mg/ml
Storage	Aliquot and store at -20°C (valid for 12 months). Avoid freeze/thaw cycles.
Shipping	Ice bags
Buffer	Liquid in PBS containing 50% glycerol, 0.5% protective protein and 0.02% New type preservative N.
Purification	Affinity purification

Application

Dilution Ratio	WB 1:500-1:2000,IHC 1:100-1:300,ICC/IF 1:200-1:1000,ELISA 1:20000-1:40000
Molecular Weight	24kDa

Antigen Information

Gene Name	HSPB2
Alternative Names	HSPB2; Heat shock protein beta-2; HspB2; DMPK-binding protein; MKBP
Gene ID	3316.0
SwissProt ID	Q16082
Immunogen	The antiserum was produced against synthesized peptide derived from human HSPB2. AA range:121-170

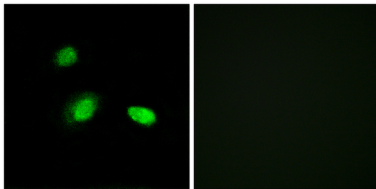
Background

The protein encoded by this gene belongs to the superfamily of small heat-shock proteins containing a conservative alpha-

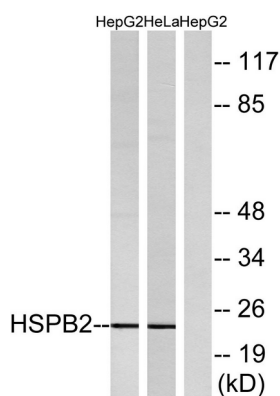
crystallin domain at the C-terminal part of the molecule. The protein is expressed preferentially in the heart and skeletal muscle. This protein regulates Myotonic Dystrophy Protein Kinase, which plays an important role in maintenance of muscle structure and function. [provided by RefSeq, Dec 2012],similarity:Belongs to the small heat shock protein (HSP20) family.,subunit:Associates specifically with myotonic dystrophy protein kinase (DMPK).,tissue specificity:Expressed preferentially in skeletal muscle and heart but not in the lens.,

Research Area

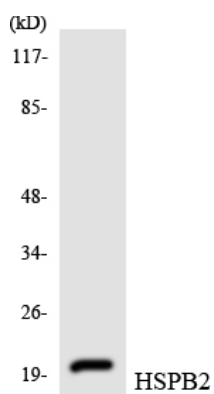
Image Data



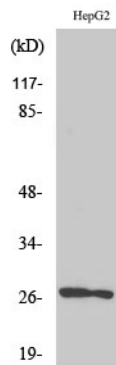
Immunofluorescence analysis of A549 cells, using HSPB2 Antibody. The picture on the right is blocked with the synthesized peptide.



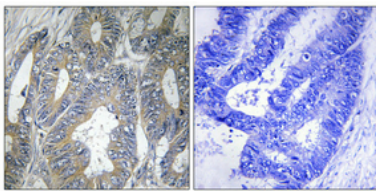
Western blot analysis of lysates from HepG2 and HeLa cells, using HSPB2 Antibody. The lane on the right is blocked with the synthesized peptide.



Western blot analysis of the lysates from HeLa cells using HSPB2 antibody.



Western Blot analysis of various cells using HSP β 2 Polyclonal Antibody



Immunohistochemical analysis of paraffin-embedded Human colon cancer. Antibody was diluted at 1:100 (4°, overnight) . High-pressure and temperature Tris-EDTA, pH 8.0 was used for antigen retrieval. Negative control (right) obtained from antibody was pre-absorbed by immunogen peptide.