
Product Name: HSP A9 Rabbit Polyclonal Antibody**Catalog #: APRab12234**

For research use only.

Summary

Description	Rabbit polyclonal Antibody
Host	Rabbit
Application	WB,IHC,ICC/IF,ELISA
Reactivity	Human,Mouse,Rat,Monkey
Conjugation	Unconjugated
Modification	Unmodified
Isotype	IgG
Clonality	Polyclonal
Form	Liquid
Concentration	1mg/ml
Storage	Aliquot and store at -20°C (valid for 12 months). Avoid freeze/thaw cycles.
Shipping	Ice bags
Buffer	Liquid in PBS containing 50% glycerol, 0.5% protective protein and 0.02% New type preservative N.
Purification	Affinity purification

Application

Dilution Ratio	WB 1:500-1:2000,IHC 1:100-1:300,ICC/IF 1:200-1:1000,ELISA 1:20000-1:40000
Molecular Weight	75kDa

Antigen Information

Gene Name	HSPA9 HSPA9; GRP75; HSPA9B; Stress-70 protein; mitochondrial; 75 kDa glucose-regulated
Alternative Names	protein; GRP-75; Heat shock 70 kDa protein 9; Mortalin; MOT; Peptide-binding protein 74; PBP74
Gene ID	3313.0
SwissProt ID	P38646/Q8N1C8
Immunogen	The antiserum was produced against synthesized peptide derived from human GRP75. AA range:630-679

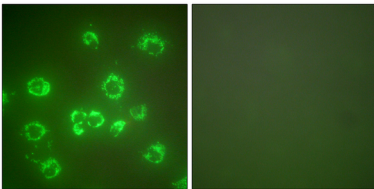
Background

This gene encodes a member of the heat shock protein 70 gene family. The encoded protein is primarily localized to the mitochondria but is also found in the endoplasmic reticulum, plasma membrane and cytoplasmic vesicles. This protein is a heat-shock cognate protein. This protein plays a role in cell proliferation, stress response and maintenance of the mitochondria. A pseudogene of this gene is found on chromosome 2.[provided by RefSeq, May 2010],function:Implicated in the control of cell proliferation and cellular aging. May also act as a chaperone.,PTM:Phosphorylated upon DNA damage, probably by ATM or ATR.,similarity:Belongs to the heat shock protein 70 family.,subunit:Interacts with FXN.,

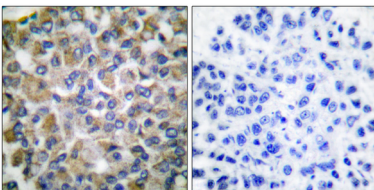
Research Area

RNA degradation;

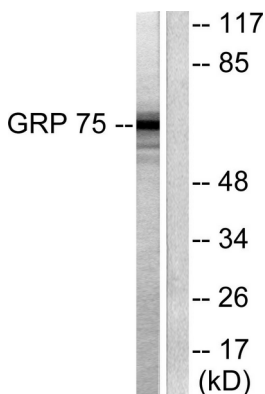
Image Data



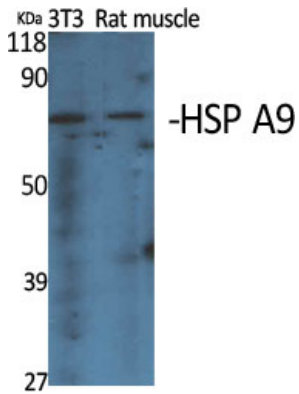
Immunofluorescence analysis of COS7 cells, using GRP75 Antibody. The picture on the right is blocked with the synthesized peptide.



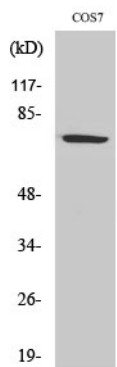
Immunohistochemistry analysis of paraffin-embedded human breast carcinoma tissue, using GRP75 Antibody. The picture on the right is blocked with the synthesized peptide.



Western blot analysis of lysates from COS7 cells, using GRP75 Antibody. The lane on the right is blocked with the synthesized peptide.



Western Blot analysis of various cells using HSP A9 Polyclonal Antibody diluted at 1 : 2000



Western Blot analysis of COS7 cells using HSP A9 Polyclonal Antibody diluted at 1 : 2000