

**Product Name: HSF2 Rabbit Polyclonal Antibody****Catalog #: APRab12224**

For research use only.

**Summary**

<b>Description</b>	Rabbit polyclonal Antibody
<b>Host</b>	Rabbit
<b>Application</b>	WB,IHC,ICC/IF,ELISA
<b>Reactivity</b>	Human,Mouse,Rat
<b>Conjugation</b>	Unconjugated
<b>Modification</b>	Unmodified
<b>Isotype</b>	IgG
<b>Clonality</b>	Polyclonal
<b>Form</b>	Liquid
<b>Concentration</b>	1mg/ml
<b>Storage</b>	Aliquot and store at -20°C (valid for 12 months). Avoid freeze/thaw cycles.
<b>Shipping</b>	Ice bags
<b>Buffer</b>	Liquid in PBS containing 50% glycerol, 0.5% protective protein and 0.02% New type preservative N.
<b>Purification</b>	Affinity purification

**Application**

<b>Dilution Ratio</b>	WB 1:500-1:2000,IHC 1:100-1:300,ICC/IF 1:50-1:200,ELISA 1:10000-1:20000
<b>Molecular Weight</b>	85kDa

**Antigen Information**

<b>Gene Name</b>	HSF2
<b>Alternative Names</b>	HSF2; HSTF2; Heat shock factor protein 2; HSF 2; Heat shock transcription factor 2; HSTF 2
<b>Gene ID</b>	3298.0
<b>SwissProt ID</b>	Q03933
<b>Immunogen</b>	The antiserum was produced against synthesized peptide derived from human HSF2. AA range:401-450

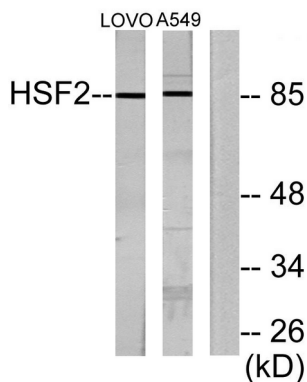
**Background**

heat shock transcription factor 2(HSF2) Homo sapiens    The protein encoded by this gene belongs to the HSF family of

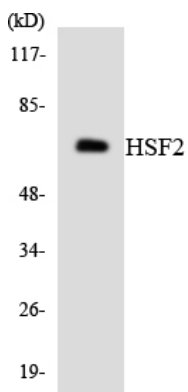
transcription factors that bind specifically to the heat-shock promoter element and activate transcription. Heat shock transcription factors activate heat-shock response genes under conditions of heat or other stresses. Alternatively spliced transcript variants encoding different isoforms have been found for this gene. [provided by RefSeq, Jul 2011],function:DNA-binding protein that specifically binds heat shock promoter elements (HSE) and activates transcription. In higher eukaryotes, HSF is unable to bind to the HSE unless the cells are heat shocked.,similarity:Belongs to the HSF family.,subcellular location:Cytoplasmic during normal growth and moves to the nucleus upon activation.,subunit:DNA-binding homotrimer in stressed or heat shocked cells, otherwise found as a homodimer.,

## Research Area

## Image Data



Western blot analysis of lysates from LOVO and A549 cells, using HSF2 Antibody. The lane on the right is blocked with the synthesized peptide.



Western blot analysis of the lysates from HeLa cells using HSF2 antibody.