
Product Name: HSF1 Rabbit Polyclonal Antibody**Catalog #: APRab12222**

For research use only.

Summary

Description	Rabbit polyclonal Antibody
Host	Rabbit
Application	WB,IHC,ICC/IF,ELISA
Reactivity	Human,Mouse
Conjugation	Unconjugated
Modification	Unmodified
Isotype	IgG
Clonality	Polyclonal
Form	Liquid
Concentration	1mg/ml
Storage	Aliquot and store at -20°C (valid for 12 months). Avoid freeze/thaw cycles.
Shipping	Ice bags
Buffer	Liquid in PBS containing 50% glycerol, 0.5% protective protein and 0.02% New type preservative N.
Purification	Affinity purification

Application

Dilution Ratio	WB 1:500-1:2000,IHC 1:100-1:300,ICC/IF 1:200-1:1000,ELISA 1:5000-1:20000
Molecular Weight	82kDa

Antigen Information

Gene Name	HSF1
Alternative Names	HSF1; HSTF1; Heat shock factor protein 1; HSF 1; Heat shock transcription factor 1; HSTF 1
Gene ID	3297.0
SwissProt ID	Q00613
Immunogen	The antiserum was produced against synthesized peptide derived from human HSF1. AA range:270-319

Background

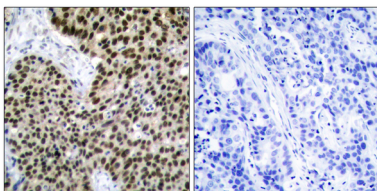
heat shock transcription factor 1(HSF1) Homo sapiens The product of this gene is a transcription factor that is rapidly induced

after temperature stress and binds heat shock promoter elements (HSE). This protein plays a role in the regulation of lifespan. Expression of this gene is repressed by phosphorylation, which promotes binding by heat shock protein 90. [provided by RefSeq, Aug 2016],function:DNA-binding protein that specifically binds heat shock promoter elements (HSE) and activates transcription. In higher eukaryotes, HSF is unable to bind to the HSE unless the cells are heat shocked.,PTM:Phosphorylated on multiple serine residues, a subset of which are involved in stress-related regulation of transcription activation. Constitutive phosphorylation represses transcriptional activity at normal temperatures. Levels increase on specific residues heat-shock and enhance HSF1 transactivation activity. Phosphorylation on Ser-307 derepresses activation on heat-stress and in combination with Ser-303 phosphorylation appears to be involved in recovery after heat-stress. Phosphorylated on Ser-230 by CAMK2, in vitro. Cadmium also enhances phosphorylation at this site. Phosphorylation on Ser-303 is a prerequisite for HSF1 sumoylation. Phosphorylation on Ser-121 inhibits transactivation and promotes HSP90 binding. Phosphorylation on Thr-142 also mediates transcriptional activity induced by heat.,PTM:Sumoylated BY SUMO1 AND SUMO2 on heat-shock. Heat-inducible sumoylation occurs after 15 min of heat-shock, after which levels decrease and at 4 hours, levels return to control levels. Sumoylation has no effect on HSE binding nor on transcriptional activity. Phosphorylation on Ser-303 is a prerequisite for sumoylation.,similarity:Belongs to the HSF family.,subcellular location:Cytoplasmic during normal growth. On activation, translocates to nuclear stress granules. Colocalizes with SUMO1 in nuclear stress granules.,subunit:Monomer. Under normal conditions, interacts with HSP90AA1 in the HSP90 multichaperone complex; the interaction prevents trimerization and activation of HSF1. On activation by heat-stress or by other factors such as metal ions, HSF1 is released from the complex, homotrimerizes, is hyperphosphorylated and translocated to the nucleus where, subsequently, it can activate transcription. Binds the complex through the regulatory domain. Interacts with SYMPK and CSTF2 in heat-stressed cells. Interacts with FKBP4 in the HSP90 multichaperone complex; the interaction is independent of the phosphorylation state of HSF1. Interacts with MAPKAPK2.,

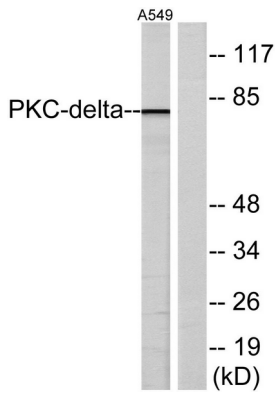
Research Area

SAPK_JNK

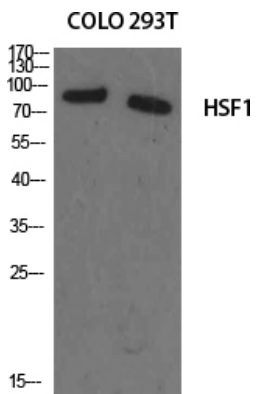
Image Data



Immunohistochemistry analysis of paraffin-embedded human breast carcinoma tissue, using HSF1 Antibody. The picture on the right is blocked with the synthesized peptide.



Western blot analysis of lysates from A549 cells, treated with TNF- α 20ng/ml 30', using HSF1 Antibody. The lane on the right is blocked with the synthesized peptide.



Western Blot analysis of various cells using HSF1 Polyclonal Antibody diluted at 1:1000