

**Product Name: HSC 70 Rabbit Polyclonal Antibody****Catalog #: APRab12216**

For research use only.

**Summary**

<b>Description</b>	Rabbit polyclonal Antibody
<b>Host</b>	Rabbit
<b>Application</b>	WB,ELISA
<b>Reactivity</b>	Human,Mouse,Rat
<b>Conjugation</b>	Unconjugated
<b>Modification</b>	Unmodified
<b>Isotype</b>	IgG
<b>Clonality</b>	Polyclonal
<b>Form</b>	Liquid
<b>Concentration</b>	1mg/ml
<b>Storage</b>	Aliquot and store at -20°C (valid for 12 months). Avoid freeze/thaw cycles.
<b>Shipping</b>	Ice bags
<b>Buffer</b>	Liquid in PBS containing 50% glycerol, 0.5% protective protein and 0.02% New type preservative N.
<b>Purification</b>	Affinity purification

**Application**

<b>Dilution Ratio</b>	WB 1:500-1:2000,ELISA 1:5000-1:20000
<b>Molecular Weight</b>	70kDa

**Antigen Information**

<b>Gene Name</b>	HSPA8
<b>Alternative Names</b>	HSPA8; HSC70; HSP73; HSPA10; Heat shock cognate 71 kDa protein; Heat shock 70 kDa protein 8
<b>Gene ID</b>	3312.0
<b>SwissProt ID</b>	P11142
<b>Immunogen</b>	The antiserum was produced against synthesized peptide derived from human HSC 70. AA range:202-251

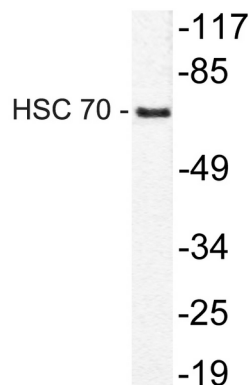
**Background**

This gene encodes a member of the heat shock protein 70 family, which contains both heat-inducible and constitutively expressed members. This protein belongs to the latter group, which are also referred to as heat-shock cognate proteins. It functions as a chaperone, and binds to nascent polypeptides to facilitate correct folding. It also functions as an ATPase in the disassembly of clathrin-coated vesicles during transport of membrane components through the cell. Alternatively spliced transcript variants encoding different isoforms have been found for this gene. [provided by RefSeq, Aug 2011],function:Chaperone. Isoform 2 may function as an endogenous inhibitory regulator of HSC70 by competing the co-chaperones.,induction:Constitutively synthesized.,PTM:Phosphorylated upon DNA damage, probably by ATM or ATR.,similarity:Belongs to the heat shock protein 70 family.,subcellular location:Translocates rapidly from the cytoplasm to the nuclei, and especially to the nucleoli, upon heat shock. Identified by mass spectrometry in melanosome fractions from stage I to stage IV.,subunit:Interacts with HSPH1/HSP105. Interacts with IRAK1BP1 (By similarity). Interacts with PACRG and TSC2. Interacts with SV40 VP1.,tissue specificity:Ubiquitous.,

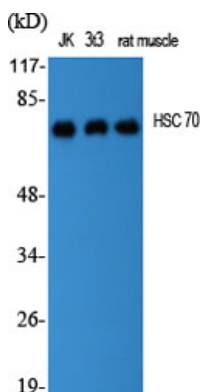
## Research Area

Spliceosome;MAPK\_ERK\_Growth;MAPK\_G\_Protein;Endocytosis;Antigen processing and presentation;

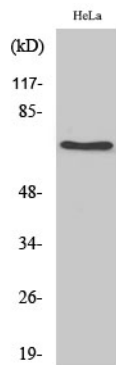
## Image Data



Western blot analysis of lysate from HeLa cells, using HSC 70 antibody.



Western Blot analysis of various cells using HSC 70 Polyclonal Antibody diluted at 1 : 2000



Western Blot analysis of HepG2 cells using HSC 70 Polyclonal Antibody diluted at 1 : 2000