

---

**Product Name: Hrs Rabbit Polyclonal Antibody****Catalog #: APRab12209**

For research use only.

**Summary**

<b>Description</b>	Rabbit polyclonal Antibody
<b>Host</b>	Rabbit
<b>Application</b>	WB,IHC,ICC/IF,ELISA
<b>Reactivity</b>	Human,Mouse,Rat
<b>Conjugation</b>	Unconjugated
<b>Modification</b>	Unmodified
<b>Isotype</b>	IgG
<b>Clonality</b>	Polyclonal
<b>Form</b>	Liquid
<b>Concentration</b>	1mg/ml
<b>Storage</b>	Aliquot and store at -20°C (valid for 12 months). Avoid freeze/thaw cycles.
<b>Shipping</b>	Ice bags
<b>Buffer</b>	Liquid in PBS containing 50% glycerol, 0.5% protective protein and 0.02% New type preservative N.
<b>Purification</b>	Affinity purification

**Application**

<b>Dilution Ratio</b>	WB 1:500-1:2000,IHC 1:100-1:300,ICC/IF 1:200-1:1000,ELISA 1:10000-1:20000
<b>Molecular Weight</b>	80kDa

**Antigen Information**

<b>Gene Name</b>	HGS
<b>Alternative Names</b>	HGS; HRS; Hepatocyte growth factor-regulated tyrosine kinase substrate; Hrs; Protein pp110
<b>Gene ID</b>	9146.0
<b>SwissProt ID</b>	O14964
<b>Immunogen</b>	The antiserum was produced against synthesized peptide derived from human HRS. AA range:301-350

**Background**

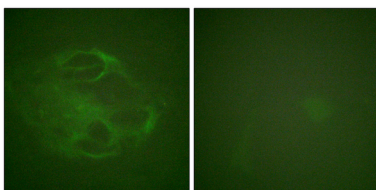
The protein encoded by this gene regulates endosomal sorting and plays a critical role in the recycling and degradation of

membrane receptors. The encoded protein sorts monoubiquitinated membrane proteins into the multivesicular body, targeting these proteins for lysosome-dependent degradation. [provided by RefSeq, Dec 2010],domain:Has a double-sided UIM that can bind 2 ubiquitin molecules, one on each side of the helix.,function:Involved in intracellular signal transduction mediated by cytokines and growth factors. When associated with STAM, it suppresses DNA signaling upon stimulation by IL-2 and GM-CSF. Could be a direct effector of PI3-kinase in vesicular pathway via early endosomes and may regulate trafficking to early and late endosomes by recruiting clathrin. May concentrate ubiquitinated receptors within clathrin-coated regions. Involved in down-regulation of receptor tyrosine kinase via multivesicular body (MVBs) when complexed with STAM (ESCRT-0 complex). The ESCRT-0 complex binds ubiquitin and acts as sorting machinery that recognizes ubiquitinated receptors and transfers them to further sequential lysosomal sorting/trafficking processes. May contribute to the efficient recruitment of SMADs to the activin receptor complex.,PTM:Phosphorylated on Tyr-334. A minor site of phosphorylation on Tyr-329 is detected (By similarity). Phosphorylation occurs in response to EGF, IL-2, GM-CSF and HGF.,similarity:Contains 1 FYVE-type zinc finger.,similarity:Contains 1 UIM (ubiquitin-interacting motif) repeat.,similarity:Contains 1 VHS domain.,subunit:Component of the ESCRT-0 complex composed of STAM or STAM2 and HGS. Part of a complex at least composed of HSG, STAM2 (or probably STAM) and EPS15. Interacts with STAM. Interacts with STAM2. Interacts with EPS15; the interaction is direct, calcium-dependent and inhibited by SNAP25. Interacts with NF2; the interaction is direct. Interacts with ubiquitin; the interaction is direct. Interacts with VPS37C. Interacts with SMAD1, SMAD2 and SMAD3. Interacts with TSG101; the interaction mediates the association with the ESCRT-I complex. Interacts with SNAP25; the interaction is direct and decreases with addition of increasing concentrations of free calcium. Interacts with SNX1; the interaction is direct. Component of a 550 kDa membrane complex at least composed of HGS and SNX1 but excluding EGFR.,tissue specificity:Ubiquitous expression in adult and fetal tissues with higher expression in testis and peripheral blood leukocytes.,

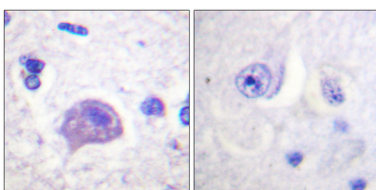
## Research Area

Endocytosis;

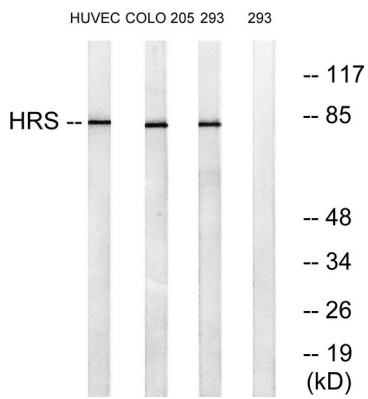
## Image Data



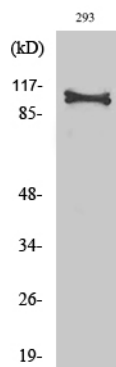
Immunofluorescence analysis of HeLa cells, using HRS Antibody. The picture on the right is blocked with the synthesized peptide.



Immunohistochemistry analysis of paraffin-embedded human brain tissue, using HRS Antibody. The picture on the right is blocked with the synthesized peptide.



Western blot analysis of lysates from 293, COLO, and HUVEC cells, using HRS Antibody. The lane on the right is blocked with the synthesized peptide.



Western Blot analysis of various cells using Hrs Polyclonal Antibody diluted at 1 : 500