

**Product Name: HRP-3 Rabbit Polyclonal Antibody****Catalog #: APRab12207**

For research use only.

**Summary**

<b>Description</b>	Rabbit polyclonal Antibody
<b>Host</b>	Rabbit
<b>Application</b>	WB,IHC,ICC/IF,ELISA
<b>Reactivity</b>	Human,Mouse,Rat
<b>Conjugation</b>	Unconjugated
<b>Modification</b>	Unmodified
<b>Isotype</b>	IgG
<b>Clonality</b>	Polyclonal
<b>Form</b>	Liquid
<b>Concentration</b>	1mg/ml
<b>Storage</b>	Aliquot and store at -20°C (valid for 12 months). Avoid freeze/thaw cycles.
<b>Shipping</b>	Ice bags
<b>Buffer</b>	Liquid in PBS containing 50% glycerol, 0.5% protective protein and 0.02% New type preservative N.
<b>Purification</b>	Affinity purification

**Application**

<b>Dilution Ratio</b>	WB 1:500-1:2000,IHC 1:100-1:300,ICC/IF 1:50-1:200,ELISA 1:10000-1:20000
<b>Molecular Weight</b>	23kDa

**Antigen Information**

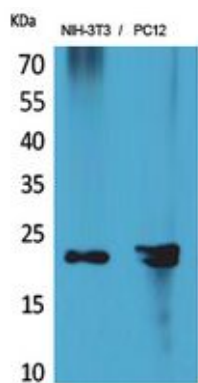
<b>Gene Name</b>	HDGFRP3
<b>Alternative Names</b>	HDGFRP3; HDGF2; CGI-142; Hepatoma-derived growth factor-related protein 3; HRP-3; Hepatoma-derived growth factor 2; HDGF-2
<b>Gene ID</b>	50810.0
<b>SwissProt ID</b>	Q9Y3E1
<b>Immunogen</b>	The antiserum was produced against synthesized peptide derived from the Internal region of human HDGFRP3. AA range:131-180

**Background**

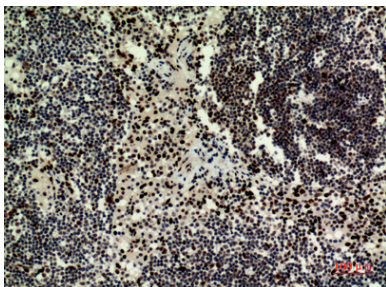
function:Enhances DNA synthesis and may play a role in cell proliferation.,similarity:Belongs to the HDGF family.,similarity:Contains 1 PWWP domain.,tissue specificity:Detected in testis, heart, spinal cord and brain.,function:Enhances DNA synthesis and may play a role in cell proliferation.,similarity:Belongs to the HDGF family.,similarity:Contains 1 PWWP domain.,tissue specificity:Detected in testis, heart, spinal cord and brain.,

## Research Area

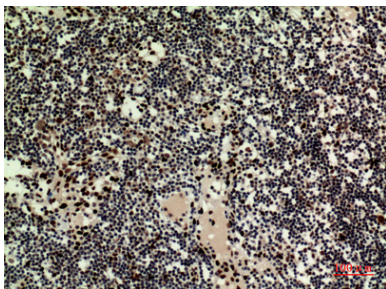
## Image Data



Western Blot analysis of NIH-3T3, PC12 cells using HRP-3 Polyclonal Antibody..  
Secondary antibody was diluted at 1:20000



Immunohistochemical analysis of paraffin-embedded human-Lymph-nodes,  
antibody was diluted at 1:100



Immunohistochemical analysis of paraffin-embedded human-Lymph-nodes,  
antibody was diluted at 1:100