

Product Name: HRF Rabbit Polyclonal Antibody**Catalog #: APRab12201**

For research use only.

Summary

Description	Rabbit polyclonal Antibody
Host	Rabbit
Application	WB,IHC,ICC/IF,ELISA
Reactivity	Human,Mouse,Rat
Conjugation	Unconjugated
Modification	Unmodified
Isotype	IgG
Clonality	Polyclonal
Form	Liquid
Concentration	1mg/ml
Storage	Aliquot and store at -20°C (valid for 12 months). Avoid freeze/thaw cycles.
Shipping	Ice bags
Buffer	Liquid in PBS containing 50% glycerol, 0.5% protective protein and 0.02% New type preservative N.
Purification	Affinity purification

Application

Dilution Ratio	WB 1:500-1:2000,IHC 1:100-1:300,ICC/IF 1:200-1:1000,ELISA 1:10000-1:20000
Molecular Weight	24kDa

Antigen Information

Gene Name	TPT1
Alternative Names	TPT1; Translationally-controlled tumor protein; TCTP; Fortilin; Histamine-releasing factor; HRF; p23
Gene ID	7178.0
SwissProt ID	P13693
Immunogen	The antiserum was produced against synthesized peptide derived from human TCTP. AA range:71-120

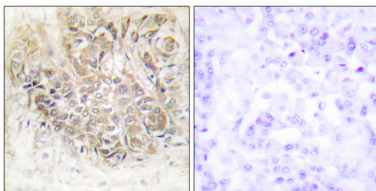
Background

function:Involved in calcium binding and microtubule stabilization.,similarity:Belongs to the TCTP family.,subunit:Interacts with STEAP3.,tissue specificity:Found in several healthy and tumoral cells including erythrocytes, hepatocytes, macrophages, platelets, keratinocytes, erythroleukemia cells, gliomas, melanomas, hepatoblastomas, and lymphomas. It cannot be detected in kidney and renal cell carcinoma (RCC). Expressed in placenta and prostate.,function:Involved in calcium binding and microtubule stabilization.,similarity:Belongs to the TCTP family.,subunit:Interacts with STEAP3.,tissue specificity:Found in several healthy and tumoral cells including erythrocytes, hepatocytes, macrophages, platelets, keratinocytes, erythroleukemia cells, gliomas, melanomas, hepatoblastomas, and lymphomas. It cannot be detected in kidney and renal cell carcinoma (RCC). Expressed in placenta and prostate.,

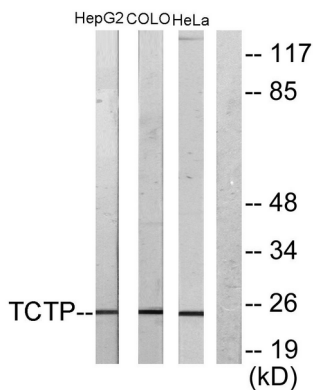
Research Area

Immunology

Image Data



Immunohistochemistry analysis of paraffin-embedded human breast carcinoma tissue, using TCTP Antibody. The picture on the right is blocked with the synthesized peptide.



Western blot analysis of lysates from HepG2 and COLO205/HeLa cells, using TCTP Antibody. The lane on the right is blocked with the synthesized peptide.



Western Blot analysis of various cells using HRF Polyclonal Antibody