
Product Name: Hox-C6 Rabbit Polyclonal Antibody**Catalog #: APRab12176**

For research use only.

Summary

Description	Rabbit polyclonal Antibody
Host	Rabbit
Application	WB,IHC,ICC/IF,ELISA
Reactivity	Human,Mouse
Conjugation	Unconjugated
Modification	Unmodified
Isotype	IgG
Clonality	Polyclonal
Form	Liquid
Concentration	1mg/ml
Storage	Aliquot and store at -20°C (valid for 12 months). Avoid freeze/thaw cycles.
Shipping	Ice bags
Buffer	Liquid in PBS containing 50% glycerol, 0.5% protective protein and 0.02% New type preservative N.
Purification	Affinity purification

Application

Dilution Ratio	WB 1:500-1:2000,IHC 1:100-1:300,ICC/IF 1:200-1:1000,ELISA 1:5000-1:20000
Molecular Weight	26kDa

Antigen Information

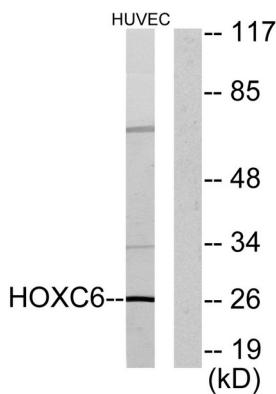
Gene Name	HOXC6
Alternative Names	HOXC6; HOX3C; Homeobox protein Hox-C6; Homeobox protein CP25; Homeobox protein HHO.C8; Homeobox protein Hox-3C
Gene ID	3223.0
SwissProt ID	P09630
Immunogen	The antiserum was produced against synthesized peptide derived from human HOXC6. AA range:186-235

Background

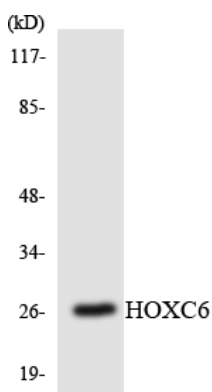
This gene belongs to the homeobox family, members of which encode a highly conserved family of transcription factors that play an important role in morphogenesis in all multicellular organisms. Mammals possess four similar homeobox gene clusters, HOXA, HOXB, HOXC and HOXD, which are located on different chromosomes and consist of 9 to 11 genes arranged in tandem. This gene, HOXC6, is one of several HOXC genes located in a cluster on chromosome 12. Three genes, HOXC5, HOXC4 and HOXC6, share a 5' non-coding exon. Transcripts may include the shared exon spliced to the gene-specific exons, or they may include only the gene-specific exons. Alternatively spliced transcript variants encoding different isoforms have been identified for HOXC6. Transcript variant two includes the shared exon, and transcript variant one includes only gene-specific exons. [provided by RefSeq, Jul 2008],function:Sequence-specific transcription factor which is part of a developmental regulatory system that provides cells with specific positional identities on the anterior-posterior axis.,similarity:Belongs to the Antp homeobox family.,similarity:Contains 1 homeobox DNA-binding domain.,

Research Area

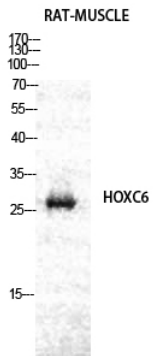
Image Data



Western blot analysis of lysates from HUVEC cells, using HOXC6 Antibody. The lane on the right is blocked with the synthesized peptide.



Western blot analysis of the lysates from Jurkat cells using HOXC6 antibody.



Western Blot analysis of RAT-MUSCLE cells using Hox-C6 Polyclonal Antibody diluted at 1: 2000.