

Product Name: hnRNP LL Rabbit Polyclonal Antibody**Catalog #: APRab12150**

For research use only.

Summary

Description	Rabbit polyclonal Antibody
Host	Rabbit
Application	WB,IHC,ICC/IF,ELISA
Reactivity	Human,Mouse,Rat
Conjugation	Unconjugated
Modification	Unmodified
Isotype	IgG
Clonality	Polyclonal
Form	Liquid
Concentration	1mg/ml
Storage	Aliquot and store at -20°C (valid for 12 months). Avoid freeze/thaw cycles.
Shipping	Ice bags
Buffer	Liquid in PBS containing 50% glycerol, 0.5% protective protein and 0.02% New type preservative N.
Purification	Affinity purification

Application

Dilution Ratio	WB 1:500-1:2000,IHC 1:100-1:300,ICC/IF 1:50-1:200,ELISA 1:10000-1:20000
Molecular Weight	60kDa

Antigen Information

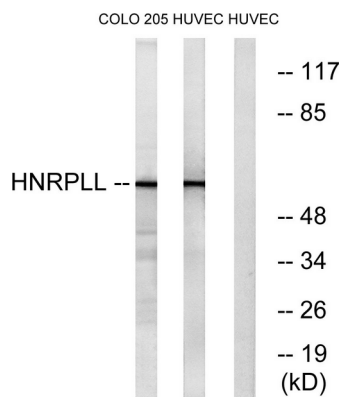
Gene Name	HNRPLL
Alternative Names	HNRPLL; SRRF; BLOCK24; Heterogeneous nuclear ribonucleoprotein L-like; hnRNPLL; Stromal RNA-regulating factor
Gene ID	92906.0
SwissProt ID	Q8WVV9
Immunogen	The antiserum was produced against synthesized peptide derived from human HNRPLL. AA range:241-290

Background

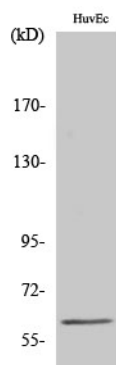
heterogeneous nuclear ribonucleoprotein L like(HNRNPLL) Homo sapiens HNRNPLL is a master regulator of activation-induced alternative splicing in T cells. In particular, it alters splicing of CD45 (PTPRC; MIM 151460), a tyrosine phosphatase essential for T-cell development and activation (Oberdoerffer et al., 2008 [PubMed 18669861]).[supplied by OMIM, Aug 2008],function:May bind RNA and play a role in mRNA processing.,similarity:Contains 3 RRM (RNA recognition motif) domains.,tissue specificity:Widely expressed. Detected in bone marrow stroma cells, skeletal muscle, heart, placenta, pancreas, kidney and lung.,

Research Area

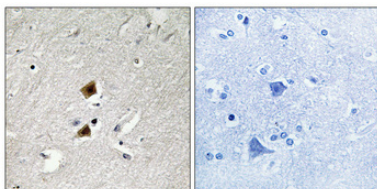
Image Data



Western blot analysis of lysates from HUVEC and COLO cells, using HNRPLL Antibody. The lane on the right is blocked with the synthesized peptide.



Western Blot analysis of various cells using hnRNP LL Polyclonal Antibody.



Immunohistochemical analysis of paraffin-embedded Human brain. Antibody was diluted at 1:100 (4°,overnight) . High-pressure and temperature Tris-EDTA,pH8.0 was used for antigen retrieval. Negative contrl (right) obtaned from antibody was pre-absorbed by immunogen peptide.