

Product Name: HLA-DO β Rabbit Polyclonal Antibody**Catalog #: APRab12082**

For research use only.

Summary

Description	Rabbit polyclonal Antibody
Host	Rabbit
Application	WB,ELISA
Reactivity	Human
Conjugation	Unconjugated
Modification	Unmodified
Isotype	IgG
Clonality	Polyclonal
Form	Liquid
Concentration	1mg/ml
Storage	Aliquot and store at -20°C (valid for 12 months). Avoid freeze/thaw cycles.
Shipping	Ice bags
Buffer	Liquid in PBS containing 50% glycerol, 0.5% protective protein and 0.02% New type preservative N.
Purification	Affinity purification

Application

Dilution Ratio	WB 1:500-1:2000,ELISA 1:20000-1:40000
Molecular Weight	30kDa

Antigen Information

Gene Name	HLA-DOB
Alternative Names	HLA-DOB; HLA class II histocompatibility antigen; DO beta chain; MHC class II antigen DOB
Gene ID	3112.0
SwissProt ID	P13765
Immunogen	The antiserum was produced against synthesized peptide derived from human HLA-DOB. AA range:1-50

Background

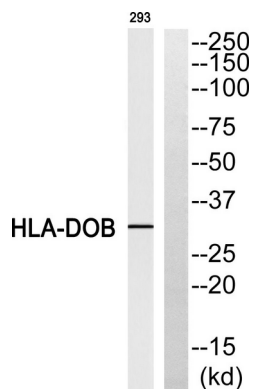
HLA-DOB belongs to the HLA class II beta chain paralogues. This class II molecule is a heterodimer consisting of an alpha (DOA)

and a beta chain (DOB), both anchored in the membrane. It is located in intracellular vesicles. DO suppresses peptide loading of MHC class II molecules by inhibiting HLA-DM. Class II molecules are expressed in antigen presenting cells (APC: B lymphocytes, dendritic cells, macrophages). The beta chain is approximately 26-28 kDa and its gene contains 6 exons. Exon one encodes the leader peptide, exons 2 and 3 encode the two extracellular domains, exon 4 encodes the transmembrane domain and exon 5 encodes the cytoplasmic tail. [provided by RefSeq, Jul 2008],function:Important modulator in the HLA class II restricted antigen presentation pathway by interaction with the HLA-DM molecule.,polymorphism:The following alleles of DOB are known: DOB*0101, DOB*0102, DOB*0103 and DOB*0104. The sequence shown is that of DOB*0101.,similarity:Belongs to the MHC class II family.,similarity:Contains 1 Ig-like C1-type (immunoglobulin-like) domain.,subunit:Heterodimer of an alpha chain (DOA) and a beta chain (DOB),

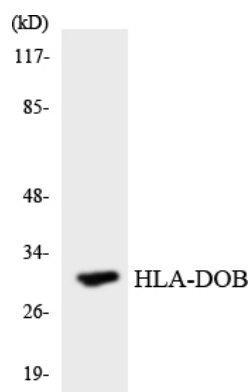
Research Area

Cell adhesion molecules (CAMs);Antigen processing and presentation;Intestinal immune network for IgA production;Type I diabetes mellitus;Asthma;Autoimmune thyroid disease;Systemic lupus erythematosus;Allograft rejection;Graft-versus-host disease;Viral myocarditis;

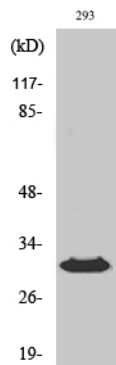
Image Data



Western blot analysis of HLA-DOB Antibody. The lane on the right is blocked with the HLA-DOB peptide.



Western blot analysis of the lysates from HeLa cells using HLA-DOB antibody.



Western Blot analysis of various cells using HLA-DO β Polyclonal Antibody diluted at 1: 1000