
Product Name: Histone H3.3 Rabbit Polyclonal Antibody**Catalog #: APRab12071**

For research use only.

Summary

Description	Rabbit polyclonal Antibody
Host	Rabbit
Application	WB,IHC,ICC/IF,ELISA
Reactivity	Human,Mouse,Rat
Conjugation	Unconjugated
Modification	Unmodified
Isotype	IgG
Clonality	Polyclonal
Form	Liquid
Concentration	1mg/ml
Storage	Aliquot and store at -20°C (valid for 12 months). Avoid freeze/thaw cycles.
Shipping	Ice bags
Buffer	Liquid in PBS containing 50% glycerol, 0.5% protective protein and 0.02% New type preservative N.
Purification	Affinity purification

Application

Dilution Ratio	WB 1:500-1:2000,IHC 1:100-1:300,ICC/IF 1:200-1:1000,ELISA 1:5000-1:10000
Molecular Weight	15kDa

Antigen Information

Gene Name	H3F3A
Alternative Names	H3F3A; H3.3A; H3F3; PP781; H3F3B; H3.3B; Histone H3.3
Gene ID	3020/3021
SwissProt ID	P84243
Immunogen	The antiserum was produced against synthesized peptide derived from human Histone H3.3. AA range:16-65

Background

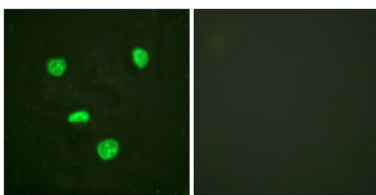
Histones are basic nuclear proteins that are responsible for the nucleosome structure of the chromosomal fiber in eukaryotes.

Two molecules of each of the four core histones (H2A, H2B, H3, and H4) form an octamer, around which approximately 146 bp of DNA is wrapped in repeating units, called nucleosomes. The linker histone, H1, interacts with linker DNA between nucleosomes and functions in the compaction of chromatin into higher order structures. This gene contains introns and its mRNA is polyadenylated, unlike most histone genes.

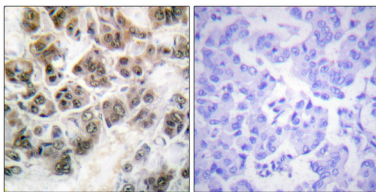
Research Area

Protein_Acetylation

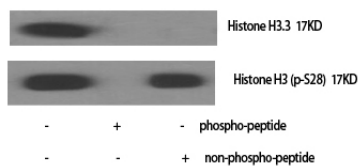
Image Data



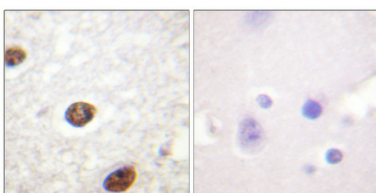
Immunofluorescence analysis of HeLa cells, using Histone H3.3 Antibody. The picture on the right is blocked with the synthesized peptide.



Immunohistochemistry analysis of paraffin-embedded human brain, using Histone H3.3 Antibody. The picture on the right is blocked with the synthesized peptide.



Western Blot analysis of HeLa cells using Histone H3.3 Polyclonal Antibody diluted at 1: 1000.



Immunohistochemical analysis of paraffin-embedded Human brain. Antibody was diluted at 1:100 (4°, overnight) . High-pressure and temperature Tris-EDTA, pH8.0 was used for antigen retrieval. Negative control (right) obtained from antibody was pre-absorbed by immunogen peptide.