

**Product Name: HIPK4 Rabbit Polyclonal Antibody****Catalog #: APRab12036**

For research use only.

**Summary**

<b>Description</b>	Rabbit polyclonal Antibody
<b>Host</b>	Rabbit
<b>Application</b>	WB,IHC,ICC/IF,ELISA
<b>Reactivity</b>	Human,Mouse,Rat
<b>Conjugation</b>	Unconjugated
<b>Modification</b>	Unmodified
<b>Isotype</b>	IgG
<b>Clonality</b>	Polyclonal
<b>Form</b>	Liquid
<b>Concentration</b>	1mg/ml
<b>Storage</b>	Aliquot and store at -20°C (valid for 12 months). Avoid freeze/thaw cycles.
<b>Shipping</b>	Ice bags
<b>Buffer</b>	Liquid in PBS containing 50% glycerol, 0.5% protective protein and 0.02% New type preservative N.
<b>Purification</b>	Affinity purification

**Application**

<b>Dilution Ratio</b>	WB 1:500-1:2000,IHC 1:100-1:300,ICC/IF 1:200-1:1000,ELISA 1:10000-1:20000
<b>Molecular Weight</b>	70kDa

**Antigen Information**

<b>Gene Name</b>	HIPK4
<b>Alternative Names</b>	HIPK4; Homeodomain-interacting protein kinase 4
<b>Gene ID</b>	147746.0
<b>SwissProt ID</b>	Q8NE63
<b>Immunogen</b>	The antiserum was produced against synthesized peptide derived from human HIPK4. AA range:511-560

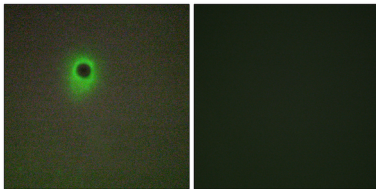
**Background**

homeodomain interacting protein kinase 4(HIPK4) Homo sapiens      This gene encodes a member of the homeodomain

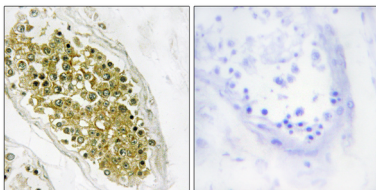
interacting protein kinase (HIPK) family of proteins. While other members of this family are found throughout vertebrates, this member is present only in mammals. Compared to other members of this family, the encoded protein lacks a nuclear localization signal and a C-terminal autoinhibitory domain. The encoded protein exhibits kinase activity and may phosphorylate the tumor suppressor protein p53. [provided by RefSeq, Jul 2016], catalytic activity: ATP + a protein = ADP + a phosphoprotein., function: Protein kinase that phosphorylates human TP53 at Ser-9, and thus induces TP53 repression of BIRC5 promoter (By similarity). May act as a corepressor of transcription factors ., PTM: Autophosphorylated., similarity: Belongs to the protein kinase superfamily. CMGC Ser/Thr protein kinase family. HIPK subfamily., similarity: Contains 1 protein kinase domain.,

## Research Area

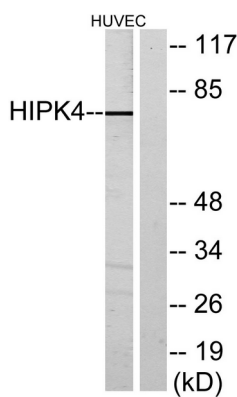
### Image Data



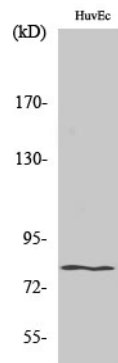
Immunofluorescence analysis of A549 cells, using HIPK4 Antibody. The picture on the right is blocked with the synthesized peptide.



Immunohistochemistry analysis of paraffin-embedded human testis tissue, using HIPK4 Antibody. The picture on the right is blocked with the synthesized peptide.



Western blot analysis of lysates from HUVEC cells, using HIPK4 Antibody. The lane on the right is blocked with the synthesized peptide.



Western Blot analysis of various cells using HIPK4 Polyclonal Antibody