

---

**Product Name: Hic-5 Rabbit Polyclonal Antibody****Catalog #: APRab12015**

For research use only.

**Summary**

<b>Description</b>	Rabbit polyclonal Antibody
<b>Host</b>	Rabbit
<b>Application</b>	WB,IHC,ICC/IF,ELISA
<b>Reactivity</b>	Human,Mouse,Rat
<b>Conjugation</b>	Unconjugated
<b>Modification</b>	Unmodified
<b>Isotype</b>	IgG
<b>Clonality</b>	Polyclonal
<b>Form</b>	Liquid
<b>Concentration</b>	1mg/ml
<b>Storage</b>	Aliquot and store at -20°C (valid for 12 months). Avoid freeze/thaw cycles.
<b>Shipping</b>	Ice bags
<b>Buffer</b>	Liquid in PBS containing 50% glycerol, 0.5% protective protein and 0.02% New type preservative N.
<b>Purification</b>	Affinity purification

**Application**

**Dilution Ratio** WB 1:500-1:2000,IHC 1:100-1:300,ICC/IF 1:200-1:1000,ELISA 1:5000-1:20000

**Molecular Weight**

**Antigen Information**

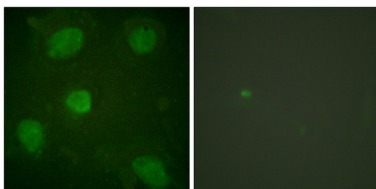
<b>Gene Name</b>	TGFB111 TGFB111; ARA55; Transforming growth factor beta-1-induced transcript 1 protein; Androgen
<b>Alternative Names</b>	receptor coactivator 55 kDa protein; Androgen receptor-associated protein of 55 kDa; Hydrogen peroxide-inducible clone 5 protein; Hic-5
<b>Gene ID</b>	7041.0
<b>SwissProt ID</b>	O43294
<b>Immunogen</b>	The antiserum was produced against synthesized peptide derived from human Hic-5. AA range:31-80

## Background

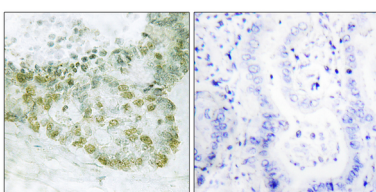
transforming growth factor beta 1 induced transcript 1(TGFB11) Homo sapiens This gene encodes a coactivator of the androgen receptor, a transcription factor which is activated by androgen and has a key role in male sexual differentiation. The encoded protein is thought to regulate androgen receptor activity and may have a role to play in the treatment of prostate cancer. Multiple transcript variants encoding different isoforms have been found for this gene. [provided by RefSeq, Sep 2009],domain:The LD (leucine and aspartate-rich) motif 3 mediates interaction with GIT1 and functions as a nuclear export signal.,domain:The LIM zinc-binding domains mediate glucocorticoid receptor coactivation and interaction with AR, CRIP2, ILK, LIMS1, NR3C1, PPARG, TCF3, TCF7L2, SLC6A3 and SMAD3. The LIM zinc-binding 2 and LIM zinc-binding 3 domains mediate targeting to focal adhesions and actin stress fibers. The LIM zinc-binding 3 and LIM zinc-binding 4 domains mediate interaction with TRAF4 and MAPK15. The LIM zinc-binding 4 domain mediates interaction with HSPB1, homooligomerization and targeting to the nuclear matrix. The LIM zinc-binding 3 domain mediates interaction with PTPN12.,function:Functions as a molecular adapter coordinating multiple protein-protein interactions at the focal adhesion complex and in the nucleus. Links various intracellular signaling modules to plasma membrane receptors and regulates the Wnt and TGFB signaling pathways. May also regulate SLC6A3 and SLC6A4 targeting to the plasma membrane hence regulating their activity. In the nucleus, functions as a nuclear receptor coactivator regulating glucocorticoid, androgen, mineralocorticoid and progesterone receptor transcriptional activity. May play a role in the processes of cell growth, proliferation, migration, differentiation and senescence. May have a zinc-dependent DNA-binding activity.,induction:Up-regulated by TNF-alpha and hydrogen peroxide.,PTM:Phosphorylated by gonadotropin-releasing hormone-activated SRC.,similarity:Belongs to the paxillin family.,similarity:Contains 4 LIM zinc-binding domains.,subcellular location:Associated with the actin cytoskeleton; colocalizes with stress fibers.,subunit:Homooligomer. Interacts with CRIP2, HSPB1, ILK, LIMS1, LIMS2, NCK2, NUDT16L1, PAK, PPARG, PTPN12, TCF3, TCF7L2 and VCL. Forms a complex with GIT1 and ARHGEF7 (By similarity). Interacts with AR/androgen receptor in a ligand-dependent manner. Interacts with CSK, LYN, MAPK15, NR3C1, PPARG, PTK2, PTK2B, SLC6A3, SLC6A4, SMAD3, SRC and talin.,tissue specificity:Expressed in platelets, smooth muscle and prostate stromal cells (at protein level),

## Research Area

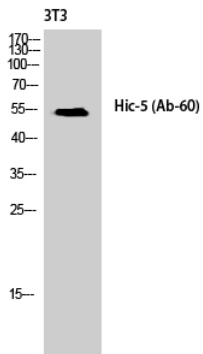
### Image Data



Immunofluorescence analysis of HeLa cells, using Hic-5 Antibody. The picture on the right is blocked with the synthesized peptide.



Immunohistochemistry analysis of paraffin-embedded human lung carcinoma tissue, using Hic-5 Antibody. The picture on the right is blocked with the synthesized peptide.



Western Blot analysis of NIH-3T3 cells using Hic-5 Polyclonal Antibody diluted at 1: 1000